

Courtesy Of Terrie M Reekie Of RE/MAX River City

\$955,500 - 6418 132 Avenue, Edmonton

MLS® #E4460929

\$955,500

0 Bedroom, 0.00 Bathroom,
Multi-Family Commercial on 0.00 Acres

Belvedere, Edmonton, AB

Fully leased and renovated 6-unit building with a detached double garage. There is an opportunity to lease the garage for additional income. The property features 2-2 bedroom, 2-1 bedrooms and 2 bachelor units. Great access to all amenities, transit and schools. This is a turnkey property that can easily be self-managed.

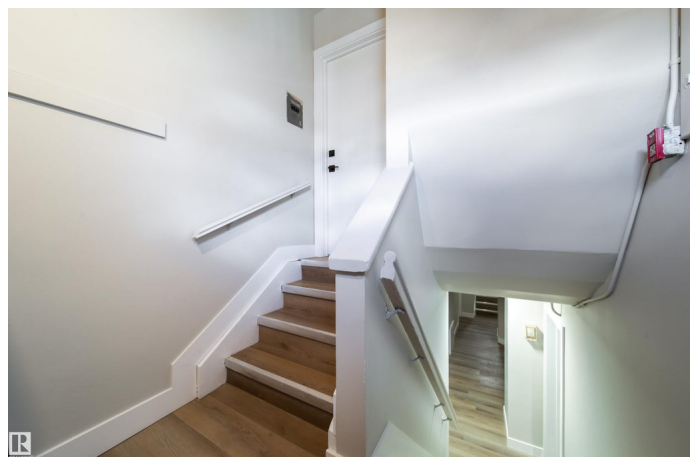
Built in 1958

Essential Information

MLS® #	E4460929
Price	\$955,500
Bathrooms	0.00
Acres	0.00
Year Built	1958
Type	Multi-Family Commercial
Status	Active

Community Information

Address	6418 132 Avenue
Area	Edmonton
Subdivision	Belvedere
City	Edmonton
County	ALBERTA
Province	AB
Postal Code	T5A 0J8



Exterior

Exterior Wood Frame
Construction Wood Frame

Additional Information

Date Listed October 3rd, 2025
Days on Market 12
Zoning Zone 02

DATA IS DEEMED RELIABLE BUT IS NOT GUARANTEED ACCURATE BY THE REALTORS® ASSOCIATION OF EDMONTON. COPYRIGHT 2025 BY THE REALTORS® ASSOCIATION OF EDMONTON. ALL RIGHTS RESERVED. Trademarks are owned or controlled by the Canadian Real Estate Association (CREA) and identify real estate professionals who are members of CREA (REALTOR®, REALTORS®) and/or the quality of services they provide (MLS®, Multiple Listing Service®)

Listing information last updated on October 15th, 2025 at 10:32am MDT