

Courtesy Of Laura C Lambert Of Mozaic Realty Group

## **\$459,900 - 9428 212 Street, Edmonton**

MLS® #E4460404

### **\$459,900**

3 Bedroom, 2.50 Bathroom, 1,554 sqft  
Single Family on 0.00 Acres

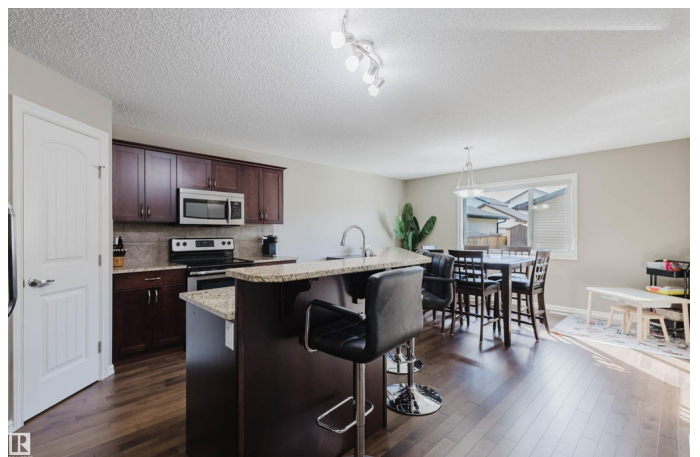
Webber Greens, Edmonton, AB

Welcome to Webber Greens! This very family oriented area offers a school within walking distance, easy major roadway access, nearby transit centre, easy trail and park access plus shopping and dining. With over 1500 sq ft to offer, this 3 bedroom, 2.5 bath home has all the features of a family home. The bright front veranda offers the perfect perch for mornings or evening hangouts. The yard also comes fully landscaped, with a deck and fully complete double car garage. Extra parking also easily available off the front street for the extra cars or visiting guests. Extras included rough-in for solar and a tankless water heater, great for larger families!

Built in 2013

### **Essential Information**

MLS® #	E4460404
Price	\$459,900
Bedrooms	3
Bathrooms	2.50
Full Baths	2
Half Baths	1
Square Footage	1,554
Acres	0.00
Year Built	2013
Type	Single Family



Sub-Type	Detached Single Family
Style	2 Storey
Status	Active

### **Community Information**

Address	9428 212 Street
Area	Edmonton
Subdivision	Webber Greens
City	Edmonton
County	ALBERTA
Province	AB
Postal Code	T5T 4R3

### **Amenities**

Amenities	On Street Parking, Deck, No Animal Home, No Smoking Home, See Remarks
Parking Spaces	2
Parking	Double Garage Detached

### **Interior**

Interior Features	ensuite bathroom
Appliances	Air Conditioning-Central, Dishwasher-Built-In, Dryer, Garage Control, Garage Opener, Microwave Hood Fan, Refrigerator, Storage Shed, Stove-Electric, Washer, Window Coverings
Heating	Forced Air-1, Natural Gas
Stories	2
Has Basement	Yes
Basement	Full, Unfinished

### **Exterior**

Exterior	Wood, Vinyl
Exterior Features	Back Lane, Fenced, Landscaped, Low Maintenance Landscape, Playground Nearby, Public Transportation, Schools, Shopping Nearby
Roof	Asphalt Shingles
Construction	Wood, Vinyl
Foundation	Concrete Perimeter

### **School Information**

Elementary	Winterburn School
Middle	Michael Phair Junior High

## Additional Information

Date Listed            October 2nd, 2025

Days on Market      13

Zoning                Zone 58

DATA IS DEEMED RELIABLE BUT IS NOT GUARANTEED ACCURATE BY THE REALTORS® ASSOCIATION OF EDMONTON. COPYRIGHT 2025 BY THE REALTORS® ASSOCIATION OF EDMONTON. ALL RIGHTS RESERVED. Trademarks are owned or controlled by the Canadian Real Estate Association (CREA) and identify real estate professionals who are members of CREA (REALTOR®, REALTORS®) and/or the quality of services they provide (MLS®, Multiple Listing Service®)

Listing information last updated on October 15th, 2025 at 1:02am MDT