

Courtesy Of David M Ozubko Of Real Broker

\$869,000 - 110 21539 Twp Road 503, Rural Leduc County

MLS® #E4454932

\$869,000

4 Bedroom, 3.00 Bathroom, 1,884 sqft

Rural on 2.75 Acres

Wildland Meadows, Rural Leduc County, AB

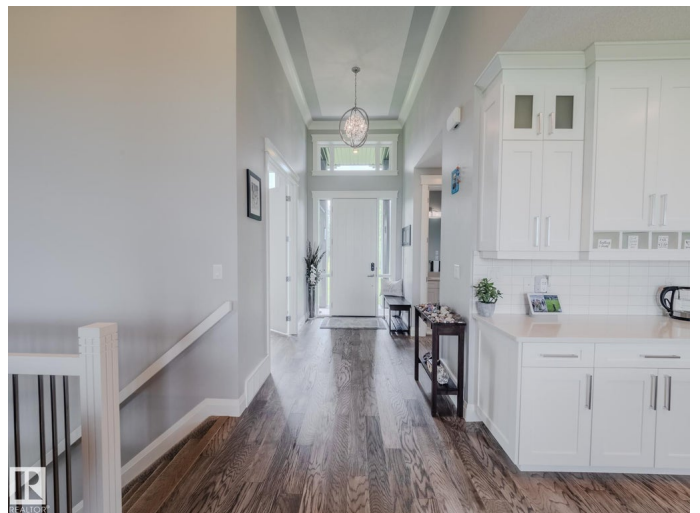
Only 20 minutes to Edmonton and Anthony Henday, this 4 bed 3 bath bungalow on 2.75 acres in Wildland Meadows is the perfect acreage near Edmonton for those seeking peace and privacy. Surrounded by a protected bird sanctuary with no future development, the property offers forever views, star-filled skies and northern lights. The main floor features 10 ft ceilings, hardwood floors and wide hallways. The custom kitchen includes an oversized quartz island, crown moulding, French doors, ceiling-height cabinets and a walk-through pantry. The primary suite has 2 walk-in closets and a spa-style ensuite with in-floor heating. The basement adds a family room with wet bar, media/theater room, 2 bedrooms and a full bath. Outside is a 18'x16' covered deck with gas BBQ line and low-maintenance decking. A heated 4-car garage with paved pad, triple-pane windows, sump pump, 125-amp service and professional landscaping complete this rural property for sale in a safe welcoming community.

Built in 2018

Essential Information

MLS® # E4454932

Price \$869,000



Bedrooms	4
Bathrooms	3.00
Full Baths	3
Square Footage	1,884
Acres	2.75
Year Built	2018
Type	Rural
Sub-Type	Detached Condominium
Style	Bungalow
Status	Active

Community Information

Address	110 21539 Twp Road 503
Area	Rural Leduc County
Subdivision	Wildland Meadows
City	Rural Leduc County
County	ALBERTA
Province	AB
Postal Code	T0B 3M2

Amenities

Features	Air Conditioner, Deck, Detectors Smoke, No Animal Home, No Smoking Home, R.V. Storage, HRV System
Parking Spaces	19

Interior

Interior Features	ensuite bathroom
Heating	Forced Air-2, Natural Gas
Fireplace	Yes
Stories	2
Has Basement	Yes
Basement	Full, Finished

Exterior

Exterior	Wood
Exterior Features	Flat Site, Private Setting, Schools, Treed Lot
Construction	Wood
Foundation	Concrete Perimeter

Additional Information

Date Listed	August 27th, 2025
Days on Market	1
Zoning	Zone 80
Condo Fee	\$125

DATA IS DEEMED RELIABLE BUT IS NOT GUARANTEED ACCURATE BY THE REALTORS® ASSOCIATION OF EDMONTON. COPYRIGHT 2025 BY THE REALTORS® ASSOCIATION OF EDMONTON. ALL RIGHTS RESERVED. Trademarks are owned or controlled by the Canadian Real Estate Association (CREA) and identify real estate professionals who are members of CREA (REALTOR®, REALTORS®) and/or the quality of services they provide (MLS®, Multiple Listing Service®)

Listing information last updated on August 28th, 2025 at 5:17am MDT