

Courtesy Of Brent MacIntosh Of RE/MAX River City

# \$875,000 - 21539 Twp Road 520, Rural Strathcona County

MLS® #E4454228

**\$875,000**

3 Bedroom, 3.00 Bathroom, 1,287 sqft  
Rural on 19.63 Acres

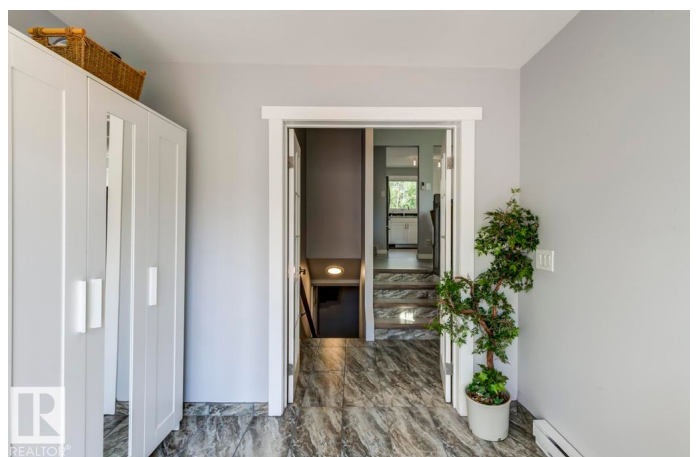
None, Rural Strathcona County, AB

Only 15 minutes from Sherwood Park, this 20-acre gated property offers the perfect mix of country tranquility and modern convenience. The fully finished bungalow is bright and inviting, featuring continuous updates including laminate flooring, a stylish kitchen with stainless steel appliances, refreshed lighting, ceiling fans, and a finished lower level. Step outside to a sprawling south- and east-facing deck with gazebo, ideal for relaxing or entertaining. A paved driveway connects to all buildings, including a versatile barn with spacious loft, tack and feed rooms, and potential for three stalls plus lean-to storage. The fully fenced pasture is currently rented for horses and includes a waterer along the fence line. For work or hobbies, the 40x30/ft quonset-style shop boasts a 14'x14' overhead door, car hoist, compressed air, 240 amp service, bright LED lighting, and two attached seacans with man-door access. Perimeter fencing, an automated gate, & security system complete this country retreat

Built in 1972

## Essential Information

MLS® #	E4454228
Price	\$875,000



Bedrooms	3
Bathrooms	3.00
Full Baths	3
Square Footage	1,287
Acres	19.63
Year Built	1972
Type	Rural
Sub-Type	Detached Single Family
Style	Bungalow
Status	Active

### **Community Information**

Address	21539 Twp Road 520
Area	Rural Strathcona County
Subdivision	None
City	Rural Strathcona County
County	ALBERTA
Province	AB
Postal Code	T8E 1E3

### **Amenities**

Features	Fire Pit, Gazebo, Parking-Extra, Vinyl Windows
----------	--

### **Interior**

Interior Features	ensuite bathroom
Heating	Forced Air-1, Natural Gas
Fireplace	Yes
Stories	2
Has Basement	Yes
Basement	Full, Finished

### **Exterior**

Exterior	Wood
Exterior Features	Fenced, Fruit Trees/Shrubs, Landscaped, Picnic Area
Construction	Wood
Foundation	Concrete Perimeter

### **Additional Information**

Date Listed	August 22nd, 2025
-------------	-------------------

Days on Market 6

Zoning Zone 80

DATA IS DEEMED RELIABLE BUT IS NOT GUARANTEED ACCURATE BY THE REALTORS® ASSOCIATION OF EDMONTON. COPYRIGHT 2025 BY THE REALTORS® ASSOCIATION OF EDMONTON. ALL RIGHTS RESERVED. Trademarks are owned or controlled by the Canadian Real Estate Association (CREA) and identify real estate professionals who are members of CREA (REALTOR®, REALTORS®) and/or the quality of services they provide (MLS®, Multiple Listing Service®)

Listing information last updated on August 28th, 2025 at 9:47am MDT