

Courtesy Of Shawn Moore-Lyons Of Initia Real Estate

\$99,900 - 306 8310 Jasper Avenue, Edmonton

MLS® #E4453589

\$99,900

1 Bedroom, 1.00 Bathroom, 586 sqft
Condo / Townhouse on 0.00 Acres

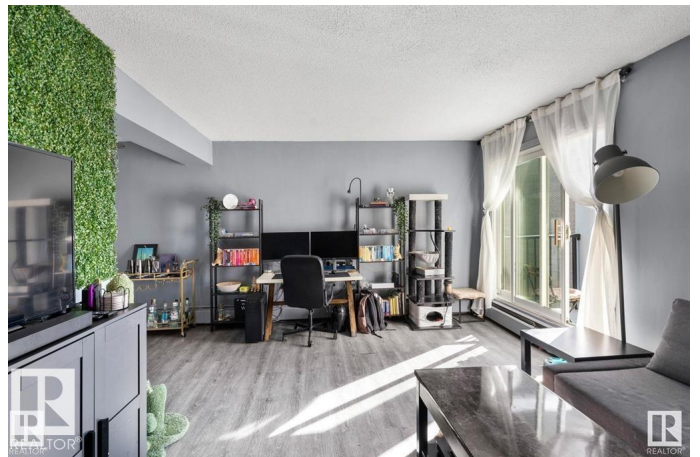
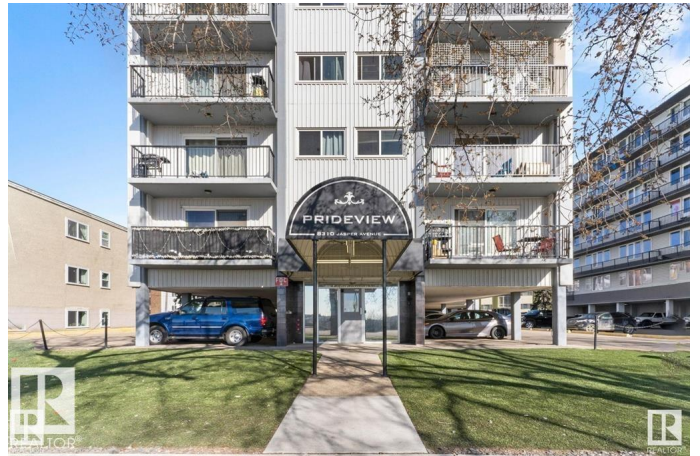
Cromdale, Edmonton, AB

Experience downtown Edmonton at its best with this well-maintained one-bedroom unit showcasing stunning views of the Saskatchewan River Valley. Ideal for investors or first-time buyers, this bright and modern suite offers both lifestyle and long-term value. It includes a portable in-suite washer and dryer, plus access to coin-operated laundry in the building—adding flexibility and everyday convenience. The unit also comes with an energized parking stall. Conveniently located just steps from shopping, transit, and more, this gem features elevator access and professional management for added peace of mind. Whether you're growing your portfolio or looking for a low-maintenance city home, this one checks all the boxes.

Built in 1968

Essential Information

MLS® #	E4453589
Price	\$99,900
Bedrooms	1
Bathrooms	1.00
Full Baths	1
Square Footage	586
Acres	0.00
Year Built	1968



Type	Condo / Townhouse
Sub-Type	Lowrise Apartment
Style	Single Level Apartment
Status	Active

Community Information

Address	306 8310 Jasper Avenue
Area	Edmonton
Subdivision	Cromdale
City	Edmonton
County	ALBERTA
Province	AB
Postal Code	T5H 3S3

Amenities

Amenities	Intercom, No Smoking Home, Parking-Plug-Ins
Parking	Stall

Interior

Appliances	Dishwasher-Built-In, Hood Fan, Oven-Microwave, Refrigerator, Stove-Electric
Heating	Hot Water, Natural Gas
# of Stories	6
Stories	4
Has Basement	Yes
Basement	None, No Basement

Exterior

Exterior	Wood, Metal
Exterior Features	Public Transportation, Schools, Shopping Nearby, View Downtown
Roof	Tar & Gravel
Construction	Wood, Metal
Foundation	Concrete Perimeter

Additional Information

Date Listed	August 15th, 2025
Days on Market	9
Zoning	Zone 09
Condo Fee	\$546

DATA IS DEEMED RELIABLE BUT IS NOT GUARANTEED ACCURATE BY THE REALTORS® ASSOCIATION OF EDMONTON. COPYRIGHT 2025 BY THE REALTORS® ASSOCIATION OF EDMONTON. ALL RIGHTS RESERVED. Trademarks are owned or controlled by the Canadian Real Estate Association (CREA) and identify real estate professionals who are members of CREA (REALTOR®, REALTORS®) and/or the quality of services they provide (MLS®, Multiple Listing Service®)

Listing information last updated on August 24th, 2025 at 4:17pm MDT