

Courtesy Of Sarah L Lizee Of RE/MAX Elite

\$1,199,000 - 70 50428 Rge Road 234, Rural Leduc County

MLS® #E4450487

\$1,199,000

4 Bedroom, 3.00 Bathroom, 1,978 sqft

Rural on 2.64 Acres

Copper Creek, Rural Leduc County, AB

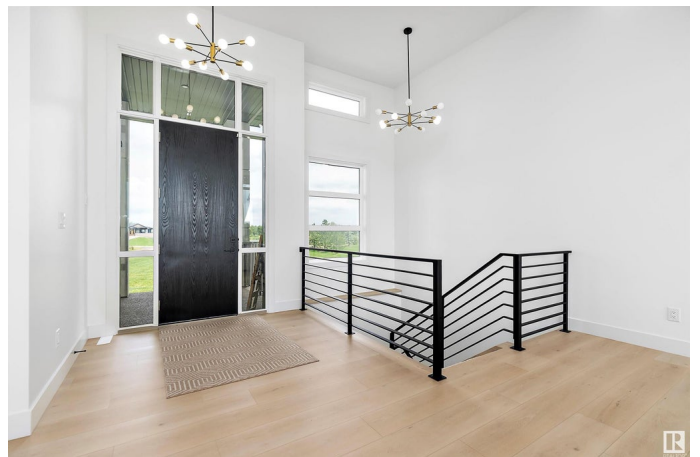
Immaculate bungalow with quad garage on pavement, located just minutes from Beaumont & Eagle Rock Golf Course. The main floor features a spacious living room with coffered ceilings, an electric fireplace, & plenty of pot lights. The chef's kitchen is complete with large island, upgraded tile backsplash, ample cabinetry, & generous walk-through pantry. Adjacent to the kitchen is a bright dining area that opens onto a covered deck. The main level also offers two large bedrooms, including a spacious primary suite with access to the covered patio, two walk-in closets, and spa-inspired ensuite featuring dual sinks & large tiled shower. A full bathroom & laundry room complete the main floor. Downstairs, the fully finished basement includes two additional large bedrooms, full bathroom with heated flooring, rec room, wet bar, & dedicated theatre room. Additional features include central AC, quartz throughout, upgraded lighting, heated quad garage, & Hunter Douglas automated blinds. Too many upgrades to list!

Built in 2023

Essential Information

MLS® #

E4450487



Price	\$1,199,000
Bedrooms	4
Bathrooms	3.00
Full Baths	3
Square Footage	1,978
Acres	2.64
Year Built	2023
Type	Rural
Sub-Type	Detached Single Family
Style	Bungalow
Status	Active

Community Information

Address	70 50428 Rge Road 234
Area	Rural Leduc County
Subdivision	Copper Creek
City	Rural Leduc County
County	ALBERTA
Province	AB
Postal Code	T4X 0L7

Amenities

Features	Air Conditioner, Closet Organizers, Deck, Hot Water Tankless, Wet Bar, HRV System
----------	---

Interior

Interior Features	ensuite bathroom
Heating	Forced Air-2, Natural Gas
Fireplace	Yes
Stories	2
Has Basement	Yes
Basement	Full, Finished

Exterior

Exterior	Wood
Exterior Features	Airport Nearby, Golf Nearby, See Remarks
Construction	Wood
Foundation	Concrete Perimeter

Additional Information

Date Listed July 31st, 2025

Days on Market 2

Zoning Zone 80

DATA IS DEEMED RELIABLE BUT IS NOT GUARANTEED ACCURATE BY THE REALTORS® ASSOCIATION OF EDMONTON. COPYRIGHT 2025 BY THE REALTORS® ASSOCIATION OF EDMONTON. ALL RIGHTS RESERVED. Trademarks are owned or controlled by the Canadian Real Estate Association (CREA) and identify real estate professionals who are members of CREA (REALTOR®, REALTORS®) and/or the quality of services they provide (MLS®, Multiple Listing Service®)

Listing information last updated on August 2nd, 2025 at 3:32am MDT