

## \$424,900 - 133 Plum Crescent, Wetaskiwin

MLS® #E4447734

**\$424,900**

6 Bedroom, 3.00 Bathroom, 1,305 sqft

Single Family on 0.00 Acres

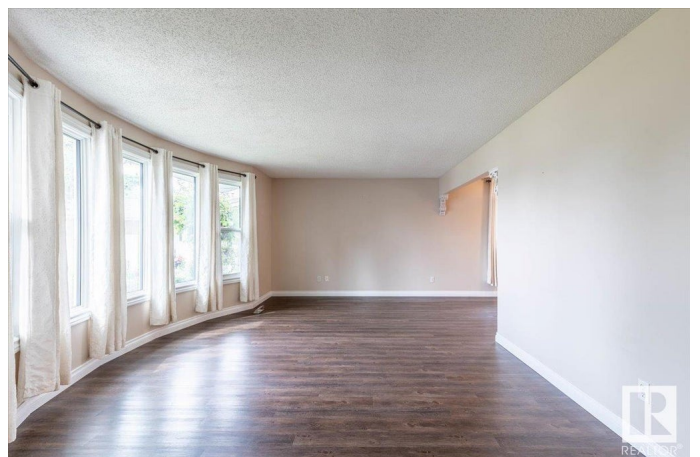
North Centennial, Wetaskiwin, AB

Location! Location! Location! Beautiful 5 Bedroom, 4-Level Split Home situated on a large pie-shaped lot, nestled in Plum Crescent. Pride of ownership beams at this property. Spacious floor-plan w/ tons of living space, enough for the whole family. Vinyl plank flooring through-out, formal dining room & functional kitchen w/ 4 appliances included. You will enjoy the cozy family room w/ wood-burning fireplace, a great space for gathering. Some recent updates include, shingles(2024) furnace(2024) central air-conditioning(2024) hwt(2020). Love the large fully fenced backyard oasis w/stamped concrete patio to lounge at & enjoy beautiful evenings, mature privacy trees, 2 sheds, gas hook-up for bbq and extra fenced-in area w/ plenty of room for a garden. Enjoy the spacious heated, double car garage. Truly, a perfect place to call home for the whole family!

Built in 1978

### Essential Information

MLS® #	E4447734
Price	\$424,900
Bedrooms	6
Bathrooms	3.00
Full Baths	3
Square Footage	1,305



Acres	0.00
Year Built	1978
Type	Single Family
Sub-Type	Detached Single Family
Style	4 Level Split
Status	Active

### Community Information

Address	133 Plum Crescent
Area	Wetaskiwin
Subdivision	North Centennial
City	Wetaskiwin
County	ALBERTA
Province	AB
Postal Code	T9A 2R9

### Amenities

Amenities	Air Conditioner, Crawl Space, Patio, Vinyl Windows
Parking	Double Garage Attached, Heated, Insulated, RV Parking

### Interior

Interior Features	ensuite bathroom
Appliances	Air Conditioning-Central, Dishwasher-Built-In, Dryer, Garage Control, Garage Opener, Oven-Microwave, Refrigerator, Storage Shed, Stove-Electric, Washer, Window Coverings, Garage Heater
Heating	Forced Air-1, Natural Gas
Fireplace	Yes
Fireplaces	Corner, Freestanding, Woodstove
Stories	4
Has Basement	Yes
Basement	Full, Finished

### Exterior

Exterior	Wood, Metal
Exterior Features	Back Lane, Cul-De-Sac, Fenced, Fruit Trees/Shrubs, Golf Nearby, Landscaped, Playground Nearby, Private Setting, Schools, Treed Lot
Roof	Asphalt Shingles
Construction	Wood, Metal
Foundation	Concrete Perimeter

**School Information**

Elementary	Centennial
Middle	Sacred Heart
High	WCHS

**Additional Information**

Date Listed	July 14th, 2025
Days on Market	17
Zoning	Zone 80

DATA IS DEEMED RELIABLE BUT IS NOT GUARANTEED ACCURATE BY THE REALTORS® ASSOCIATION OF EDMONTON. COPYRIGHT 2025 BY THE REALTORS® ASSOCIATION OF EDMONTON. ALL RIGHTS RESERVED.Trademarks are owned or controlled by the Canadian Real Estate Association (CREA) and identify real estate professionals who are members of CREA (REALTOR®, REALTORS®) and/or the quality of services they provide (MLS®, Multiple Listing Service®)

Listing information last updated on July 31st, 2025 at 3:17pm MDT