

# **\$379,900 - 23 - 54126 Range Road 52, Rural Lac Ste. Anne County**

---

MLS® #E4447595

**\$379,900**

2 Bedroom, 1.50 Bathroom, 1,120 sqft

Rural on 0.50 Acres

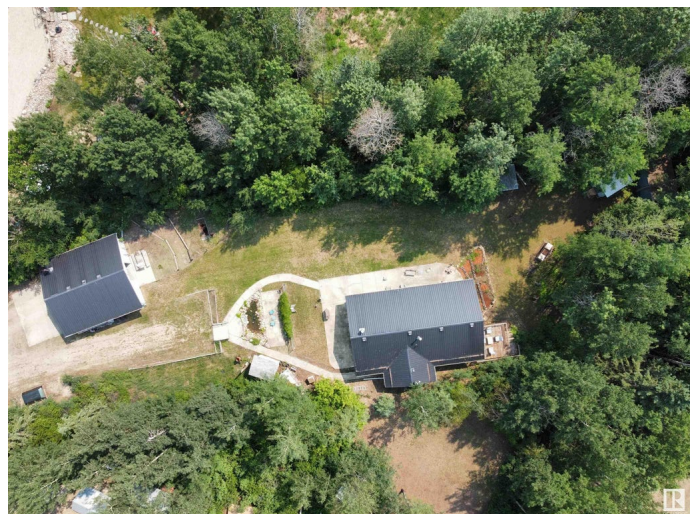
Sunnyside Estate, Rural Lac Ste. Anne County, AB

This lakefront bungalow is the perfect weekend getaway, or a perfect downsize to simple lake life living! Treed and private, RV parking, double detached garage, and your own boat shed with direct access to the boat launch/dock. Enjoy the perennial garden, vegetable garden, a shade garden and the outdoor pond! Inside you'll find a updated entry with storage, half bath for guests, laundry area, and storage closet. The kitchen has been updated, has a ton of storage and functional space! Stay cozy in the cooler months with a wood burning stove in the living room. In the summer months enjoy the patio off the living room and ALL the lovely SUN!! Down the hall is a second bedroom, and the HUGE Primary suite, ensuite and walk in closet - keep it for yourself, or set up bunks for all the guests! Off the Primary is my favourite room - the sunroom...accessed through the primary, or from the outside. Off the primary is a large sunny private deck, overlooking your yard and gardens surrounded by trees!

Built in 2000

## **Essential Information**

MLS® #                      E4447595



Price	\$379,900
Bedrooms	2
Bathrooms	1.50
Full Baths	1
Half Baths	1
Square Footage	1,120
Acres	0.50
Year Built	2000
Type	Rural
Sub-Type	Detached Single Family
Style	Bungalow
Status	Active

### Community Information

Address	23 - 54126 Range Road 52
Area	Rural Lac Ste. Anne County
Subdivision	Sunnyside Estate
City	Rural Lac Ste. Anne County
County	ALBERTA
Province	AB
Postal Code	T0E 0L0

### Amenities

Features	See Remarks
----------	-------------

### Interior

Interior Features	ensuite bathroom
Heating	Forced Air-1, Natural Gas
Fireplace	Yes
Stories	1
Has Basement	Yes
Basement	None, No Basement

### Exterior

Exterior	Wood
Exterior Features	Backs Onto Lake, Backs Onto Park/Trees, Boating, Lake Access Property, No Through Road, See Remarks
Construction	Wood
Foundation	Concrete Perimeter, Piling

**Additional Information**

Date Listed                July 14th, 2025  
Days on Market        17  
Zoning                    Zone 75

DATA IS DEEMED RELIABLE BUT IS NOT GUARANTEED ACCURATE BY THE REALTORS® ASSOCIATION OF EDMONTON. COPYRIGHT 2025 BY THE REALTORS® ASSOCIATION OF EDMONTON. ALL RIGHTS RESERVED.Trademarks are owned or controlled by the Canadian Real Estate Association (CREA) and identify real estate professionals who are members of CREA (REALTOR®, REALTORS®) and/or the quality of services they provide (MLS®, Multiple Listing Service®)  
Listing information last updated on July 31st, 2025 at 11:32am MDT