

\$590,000 - 15808 100 Street, Edmonton

MLS® #E4447132

\$590,000

6 Bedroom, 5.00 Bathroom, 3,375 sqft

Single Family on 0.00 Acres

Beaumaris, Edmonton, AB

Massive 6-bedroom, 5-bathroom home in Castle Downs with 3,374 sq ft of living space—an incredible opportunity for buyers looking for space and potential. Built in 1979, this home is solid but ready for updates and personal touches. The huge kitchen features granite countertops and an abundance of cupboards, offering the perfect foundation for a dream renovation. Skylights on the upper floor fill the home with natural light, and several fireplaces throughout add warmth and character. The 2034 sq ft main floor layout includes a den, living room, family room, formal dining room and more. A spacious open basement with tons of potential, and a double attached garage. The back yard features a concrete patio, built in BBQ and sun room. While the home needs some TLC, the size, location, and layout make it a fantastic investment. Located in the heart of Castle Downs, close to schools, parks, and shopping. With the right vision, this home could truly shine!

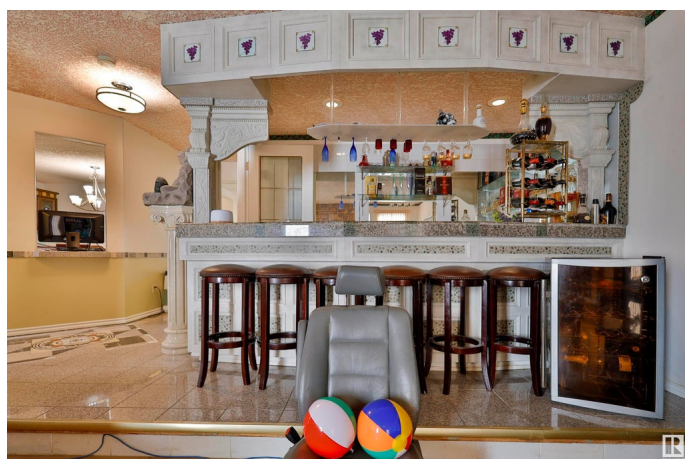
Built in 1979

Essential Information

MLS® # E4447132

Price \$590,000

Bedrooms 6



Bathrooms	5.00
Full Baths	5
Square Footage	3,375
Acres	0.00
Year Built	1979
Type	Single Family
Sub-Type	Detached Single Family
Style	2 Storey
Status	Active

Community Information

Address	15808 100 Street
Area	Edmonton
Subdivision	Beaumaris
City	Edmonton
County	ALBERTA
Province	AB
Postal Code	T5X 4E4

Amenities

Amenities	Bar, Barbecue-Built-In, Deck, Skylight, Sunroom
Parking	Double Garage Attached, Insulated

Interior

Interior Features	ensuite bathroom
Appliances	Dishwasher-Built-In, Dryer, Garage Control, Garage Opener, Hood Fan, Oven-Built-In, Refrigerator, Stove-Countertop Electric, Washer, Dryer-Two, Washers-Two
Heating	Hot Water, Oil
Fireplace	Yes
Fireplaces	Glass Door, Granite Surround
Stories	3
Has Basement	Yes
Basement	Full, Finished

Exterior

Exterior	Wood, Brick, Vinyl
Exterior Features	Back Lane, Fenced, Playground Nearby, Public Transportation, Schools, Shopping Nearby

Roof	Asphalt Shingles
Construction	Wood, Brick, Vinyl
Foundation	Concrete Perimeter

Additional Information

Date Listed	July 10th, 2025
Days on Market	21
Zoning	Zone 27

DATA IS DEEMED RELIABLE BUT IS NOT GUARANTEED ACCURATE BY THE REALTORS® ASSOCIATION OF EDMONTON. COPYRIGHT 2025 BY THE REALTORS® ASSOCIATION OF EDMONTON. ALL RIGHTS RESERVED.Trademarks are owned or controlled by the Canadian Real Estate Association (CREA) and identify real estate professionals who are members of CREA (REALTOR®, REALTORS®) and/or the quality of services they provide (MLS®, Multiple Listing Service®)

Listing information last updated on July 31st, 2025 at 1:02pm MDT