

\$569,900 - 5815 185 Street, Edmonton

MLS® #E4446731

\$569,900

3 Bedroom, 2.50 Bathroom, 2,238 sqft
Single Family on 0.00 Acres

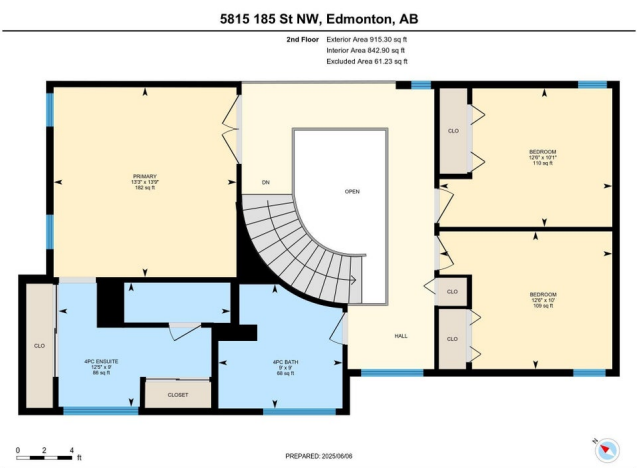
Jamieson Place, Edmonton, AB

This well-maintained 2-storey home in the Jamieson Place community boasts 3420 sq. ft. of total living space, featuring 3 beds, 2.5 baths, vaulted ceiling, double attached garage, new carpet and vinyl flooring throughout. You're greeted by a spacious foyer leading to a bright living room and dining area. The kitchen boasts countertops and a new central island. The cozy living room offers a free-standing fireplace for warmth and energy efficiency, with new sliding doors opening to a sunny southwest-facing backyard. A den and 2-pc bath complete the main floor. Upstairs, you'll find 3 bedrooms and a 4-pc shared bath, with the primary bedroom featuring a 4-pc ensuite. The fully finished basement expands your living options with a large family room, an oversized recreation room, and plenty of storage space. Upgrades: Shingles (2023), Furnace (2025), Water Tank (2025), Garage Door (2025), Front Door (2025), all house flooring (2025), 50-60% windows (2017), and most basement (2025)

Built in 1981

Essential Information

MLS® #	E4446731
Price	\$569,900
Bedrooms	3



Bathrooms	2.50
Full Baths	2
Half Baths	1
Square Footage	2,238
Acres	0.00
Year Built	1981
Type	Single Family
Sub-Type	Detached Single Family
Style	2 Storey
Status	Active

Community Information

Address	5815 185 Street
Area	Edmonton
Subdivision	Jamieson Place
City	Edmonton
County	ALBERTA
Province	AB
Postal Code	T6M 1Y1

Amenities

Amenities	Deck, Detectors Smoke, No Animal Home, No Smoking Home, Skylight
Parking	Double Garage Attached

Interior

Interior Features	ensuite bathroom
Appliances	Dryer, Hood Fan, Refrigerator, Stove-Electric, Washer
Heating	Forced Air-1, Natural Gas
Stories	3
Has Basement	Yes
Basement	Full, Finished

Exterior

Exterior	Wood, Stucco
Exterior Features	Fenced, Landscaped, Playground Nearby, Public Transportation, Schools, Shopping Nearby
Roof	Asphalt Shingles
Construction	Wood, Stucco
Foundation	Concrete Perimeter

Additional Information

Date Listed July 9th, 2025
Days on Market 2
Zoning Zone 20

DATA IS DEEMED RELIABLE BUT IS NOT GUARANTEED ACCURATE BY THE REALTORS® ASSOCIATION OF EDMONTON. COPYRIGHT 2025 BY THE REALTORS® ASSOCIATION OF EDMONTON. ALL RIGHTS RESERVED.Trademarks are owned or controlled by the Canadian Real Estate Association (CREA) and identify real estate professionals who are members of CREA (REALTOR®, REALTORS®) and/or the quality of services they provide (MLS®, Multiple Listing Service®)
Listing information last updated on July 11th, 2025 at 2:47am MDT