

## \$439,900 - 6503 King Wynd, Edmonton

MLS® #E4446671

**\$439,900**

3 Bedroom, 2.50 Bathroom, 1,396 sqft

Single Family on 0.00 Acres

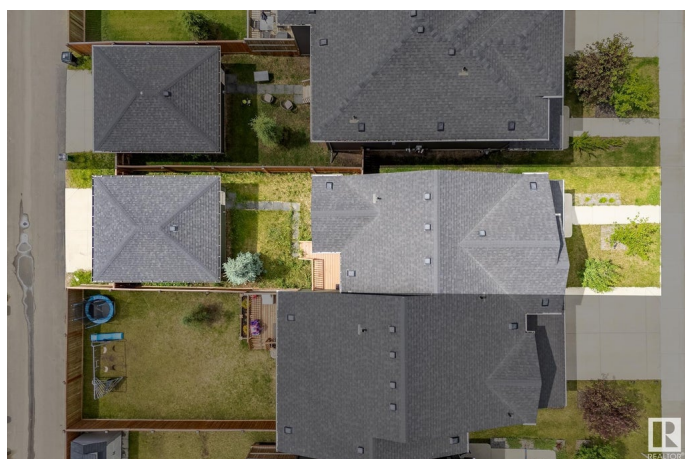
Keswick Area, Edmonton, AB

Welcome to this bright and modern 3-bedroom, 2.5-bath home offering nearly 1,400 sq ft of stylish living space. The open-concept layout includes a versatile upstairs den/flex room and convenient second-floor laundry. The spacious kitchen features sleek quartz countertops, luxury vinyl plank flooring, and is designed for both everyday living and entertaining. Built with energy efficiency in mind, enjoy a high-efficiency furnace and triple-pane windows for year-round comfort. Additional features include a double detached garage, painted basement floor, rear deck, and full landscaping—all ready for you to move in and enjoy!

Built in 2018

### Essential Information

MLS® #	E4446671
Price	\$439,900
Bedrooms	3
Bathrooms	2.50
Full Baths	2
Half Baths	1
Square Footage	1,396
Acres	0.00
Year Built	2018



Type	Single Family
Sub-Type	Half Duplex
Style	2 Storey
Status	Active

### Community Information

Address	6503 King Wynd
Area	Edmonton
Subdivision	Keswick Area
City	Edmonton
County	ALBERTA
Province	AB
Postal Code	T6W 3Z9

### Amenities

Amenities	No Animal Home, No Smoking Home
Parking	Double Garage Detached
Is Waterfront	Yes

### Interior

Interior Features	ensuite bathroom
Appliances	Dishwasher-Built-In, Dryer, Refrigerator, Stove-Electric, Washer, See Remarks
Heating	Forced Air-1, Natural Gas
Stories	2
Has Basement	Yes
Basement	Full, Unfinished

### Exterior

Exterior	Wood, Stone, Vinyl
Exterior Features	Golf Nearby, Playground Nearby, Public Transportation, Schools, Shopping Nearby, Stream/Pond, See Remarks
Roof	Asphalt Shingles
Construction	Wood, Stone, Vinyl
Foundation	Concrete Perimeter

### Additional Information

Date Listed	July 9th, 2025
Days on Market	10

Zoning                      Zone 56

HOA Fees Freq.      Annually

DATA IS DEEMED RELIABLE BUT IS NOT GUARANTEED ACCURATE BY THE REALTORS® ASSOCIATION OF EDMONTON. COPYRIGHT 2025 BY THE REALTORS® ASSOCIATION OF EDMONTON. ALL RIGHTS RESERVED. Trademarks are owned or controlled by the Canadian Real Estate Association (CREA) and identify real estate professionals who are members of CREA (REALTOR®, REALTORS®) and/or the quality of services they provide (MLS®, Multiple Listing Service®)

Listing information last updated on July 19th, 2025 at 7:17pm MDT