

# \$799,900 - 462019 Rge Road 255, Rural Wetaskiwin County

MLS® #E4445342

**\$799,900**

4 Bedroom, 2.50 Bathroom, 1,575 sqft

Rural on 19.97 Acres

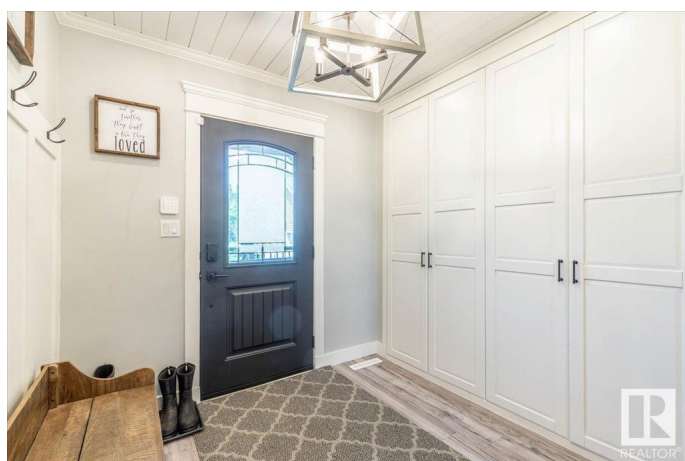
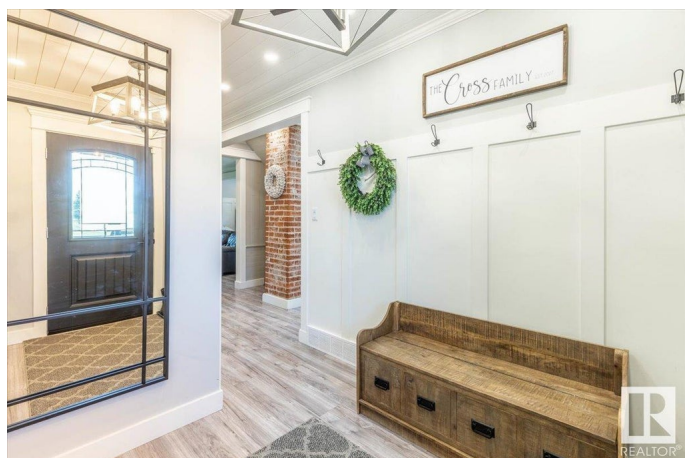
None, Rural Wetaskiwin County, AB

WELCOME TO YOUR BEAUTIFUL DREAM ACREAGE! Nestled on a sprawling 19.97 acres of pure tranquility, not in a subdivision. This property is a horse lover's paradise, complete w/ 32x60 Barn, 40x40 Shop, Quonset, 32x16 Work Shop w/8x8 walk-in & dbl car garage w/heat. Step inside this beautifully renovated character home with a new gorgeous kitchen that is sure to inspire your inner chef! Beautiful white cabinetry reaches up to the ceiling, creating a bright & airy feel w/ no wasted space. Stunning backsplash, quartz countertops, apron sink, 5 appliances & centre island are just the cherries on top, along w/ garden doors out to your private oasis. This home boasts 4 cozy bedrooms, 3 baths + central air-conditioning. Outside you will find an above-ground, heated pool w/deck and a gorgeous covered aggregate patio for dining & entertaining. Your new piece of paradise is awaiting!

Built in 1943

## Essential Information

MLS® #	E4445342
Price	\$799,900
Bedrooms	4
Bathrooms	2.50



Full Baths	2
Half Baths	1
Square Footage	1,575
Acres	19.97
Year Built	1943
Type	Rural
Sub-Type	Detached Single Family
Style	1 and Half Storey
Status	Active

### Community Information

Address	462019 Rge Road 255
Area	Rural Wetaskiwin County
Subdivision	None
City	Rural Wetaskiwin County
County	ALBERTA
Province	AB
Postal Code	T9A 1W8

### Amenities

Features	Air Conditioner, Deck, Fire Pit, No Smoking Home, Patio, Pool-Outdoor, Vinyl Windows
----------	--

### Interior

Interior Features	ensuite bathroom
Heating	Forced Air-1, Natural Gas
Fireplace	Yes
Stories	3
Has Basement	Yes
Basement	Full, Finished

### Exterior

Exterior	Wood
Exterior Features	Cross Fenced, Fenced, Fruit Trees/Shrubs, Golf Nearby, Landscaped, Stream/Pond, Treed Lot, Vegetable Garden
Construction	Wood
Foundation	Concrete Perimeter

### Additional Information

Date Listed July 2nd, 2025

Days on Market 9

Zoning Zone 80

DATA IS DEEMED RELIABLE BUT IS NOT GUARANTEED ACCURATE BY THE REALTORS® ASSOCIATION OF EDMONTON. COPYRIGHT 2025 BY THE REALTORS® ASSOCIATION OF EDMONTON. ALL RIGHTS RESERVED. Trademarks are owned or controlled by the Canadian Real Estate Association (CREA) and identify real estate professionals who are members of CREA (REALTOR®, REALTORS®) and/or the quality of services they provide (MLS®, Multiple Listing Service®)

Listing information last updated on July 11th, 2025 at 5:47am MDT