

\$649,000 - 3453 Craig Landing Landing, Edmonton

MLS® #E4445231

\$649,000

4 Bedroom, 3.50 Bathroom, 1,847 sqft

Single Family on 0.00 Acres

Chappelle Area, Edmonton, AB

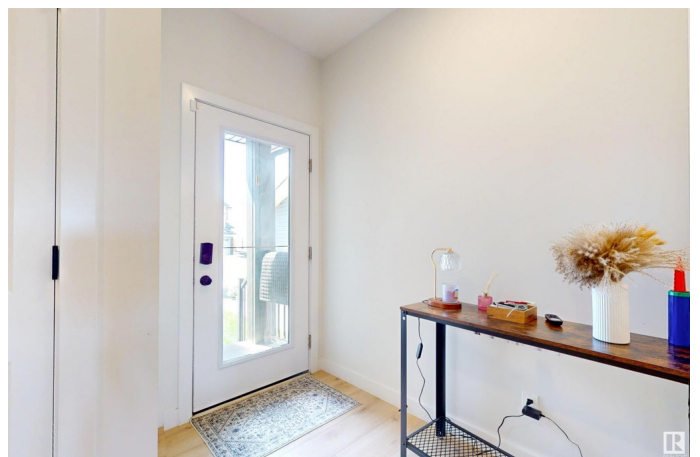
Welcome to this CENTRALLY AIR CONDITIONED beautifully designed 2-storey home located in the vibrant and family-friendly community of Chappelle in southwest Edmonton. Offering over 2500 sq ft of thoughtfully crafted living space - including the basement, this property is perfect for both homeowners and savvy investors. The main floor has an open-concept layout with a spacious living area, a stylish kitchen featuring quartz countertops, stainless steel appliances, and a walk-through pantry, plus a generous dining area ideal for entertaining. Upstairs, youâ€™ll find a large primary bedroom with a walk-in closet and en-suite, along with two additional bedrooms, a full bathroom, and a convenient upper-floor laundry. This EXCEPTIONAL home features a fully finished legal basement suite with a SIDE SEPPARATE ENTRANCE, complete with its own kitchen, living area, bedroom, full bathroom, and in-suite laundry â€“ perfect for rental income, extended family, or guests. Quick possession!!

Built in 2022

Essential Information

MLS® # E4445231

Price \$649,000



Bedrooms	4
Bathrooms	3.50
Full Baths	3
Half Baths	1
Square Footage	1,847
Acres	0.00
Year Built	2022
Type	Single Family
Sub-Type	Detached Single Family
Style	2 Storey
Status	Active

Community Information

Address	3453 Craig Landing Landing
Area	Edmonton
Subdivision	Chappelle Area
City	Edmonton
County	ALBERTA
Province	AB
Postal Code	T6W 5H2

Amenities

Amenities	Deck, No Animal Home, No Smoking Home
Parking	Double Garage Attached

Interior

Interior Features	ensuite bathroom
Appliances	Dryer, Garage Opener, Hood Fan, Stacked Washer/Dryer, Washer, Window Coverings, Refrigerators-Two, Stoves-Two, Dishwasher-Two
Heating	Forced Air-1, Natural Gas
Stories	3
Has Suite	Yes
Has Basement	Yes
Basement	Full, Finished

Exterior

Exterior	Wood, Vinyl
Exterior Features	Airport Nearby, Landscaped
Roof	Asphalt Shingles

Construction	Wood, Vinyl
Foundation	Concrete Perimeter

Additional Information

Date Listed	July 2nd, 2025
Days on Market	5
Zoning	Zone 55
HOA Fees	400
HOA Fees Freq.	Annually

DATA IS DEEMED RELIABLE BUT IS NOT GUARANTEED ACCURATE BY THE REALTORS® ASSOCIATION OF EDMONTON. COPYRIGHT 2025 BY THE REALTORS® ASSOCIATION OF EDMONTON. ALL RIGHTS RESERVED.Trademarks are owned or controlled by the Canadian Real Estate Association (CREA) and identify real estate professionals who are members of CREA (REALTOR®, REALTORS®) and/or the quality of services they provide (MLS®, Multiple Listing Service®)

Listing information last updated on July 7th, 2025 at 3:32am MDT