

\$674,900 - 4 1017 Twp Road 540, Rural Parkland County

MLS® #E4445199

\$674,900

4 Bedroom, 3.00 Bathroom, 2,051 sqft

Rural on 3.06 Acres

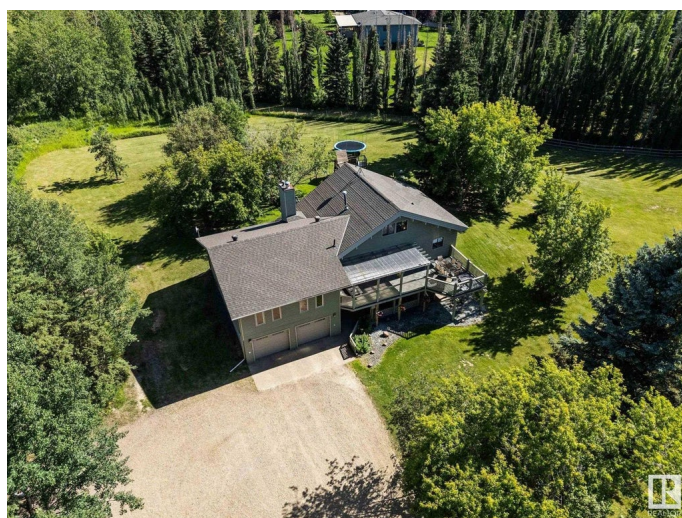
Dawn Valley, Rural Parkland County, AB

Discover the perfect blend of country living and modern convenience! This stunning 4-bedroom home sits on 3.06 acres in a fully paved subdivision, nestled in a beautiful neighborhood just 10 minutes from Stony Plain. Ideal for families, youâ€™re only 4 minutes from Muir Lake School and 5 minutes from the scenic trails and outdoor fun at Chickakoo Lake Recreation Area. The home features soaring high ceilings, a spacious 784 sq ft bonus room, and generous living spaces filled with natural light. The well, furnace, septic tank and field were all professionally done in 2020. Whether youâ€™re looking for peaceful acreage living or quick access to town amenities, this property offers it all!

Built in 1980

Essential Information

| | |
|----------------|-----------|
| MLS® # | E4445199 |
| Price | \$674,900 |
| Bedrooms | 4 |
| Bathrooms | 3.00 |
| Full Baths | 3 |
| Square Footage | 2,051 |
| Acres | 3.06 |
| Year Built | 1980 |
| Type | Rural |



| | |
|----------|------------------------|
| Sub-Type | Detached Single Family |
| Style | Hillside Split |
| Status | Active |

Community Information

| | |
|-------------|-----------------------|
| Address | 4 1017 Twp Road 540 |
| Area | Rural Parkland County |
| Subdivision | Dawn Valley |
| City | Rural Parkland County |
| County | ALBERTA |
| Province | AB |
| Postal Code | T7Y 0A6 |

Amenities

| | |
|----------|---|
| Features | Deck, Front Porch, No Smoking Home, Patio, Vaulted Ceiling, Walkout Basement, See Remarks |
|----------|---|

Interior

| | |
|-------------------|---------------------------|
| Interior Features | ensuite bathroom |
| Heating | Forced Air-1, Natural Gas |
| Stories | 3 |
| Has Basement | Yes |
| Basement | Full, Finished |

Exterior

| | |
|-------------------|--------------------|
| Exterior | Wood |
| Exterior Features | See Remarks |
| Construction | Wood |
| Foundation | Concrete Perimeter |

Additional Information

| | |
|----------------|----------------|
| Date Listed | July 1st, 2025 |
| Days on Market | 3 |
| Zoning | Zone 70 |

DATA IS DEEMED RELIABLE BUT IS NOT GUARANTEED ACCURATE BY THE REALTORS® ASSOCIATION OF EDMONTON. COPYRIGHT 2025 BY THE REALTORS® ASSOCIATION OF EDMONTON. ALL RIGHTS RESERVED. Trademarks are owned or controlled by the Canadian Real Estate Association (CREA) and identify real estate professionals who are members of CREA (REALTOR®, REALTORS®) and/or the quality of services they provide (MLS®, Multiple Listing Service®)

Listing information last updated on July 4th, 2025 at 7:17pm MDT