

# **\$349,000 - 10355 Whyte Ave, Edmonton**

MLS® #E4444792

**\$349,000**

0 Bedroom, 0.00 Bathroom,  
Business on 0.00 Acres

Strathcona, Edmonton, AB

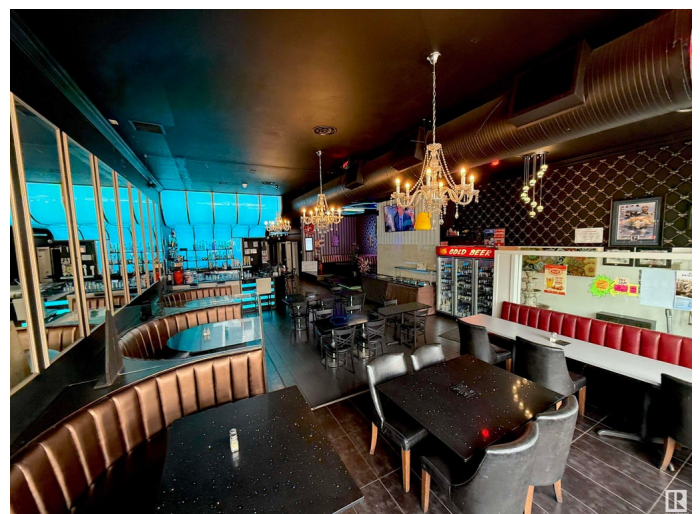
Operating for over 20 years with a strong reputation and loyal customer base Located near Whyte Avenue, one of Edmontons busiest and most vibrant areas known for its nightlife, festivals, restaurants, and constant foot traffic Business hours: 11 AM to 2 AM, catering to both daytime and late-night customers. Approximately 50% dine-in and 50% takeout/delivery 7 employees (mix of full-time and part-time). Daily specials and strong word-of-mouth within the local community. Fully employee-run suitable for an investor or semi-absentee owner. All furniture, fixtures, equipment, and inventory included in the offering. NDA Required for financials and other details.

## **Essential Information**

|           |           |
|-----------|-----------|
| MLS® #    | E4444792  |
| Price     | \$349,000 |
| Bathrooms | 0.00      |
| Acres     | 0.00      |
| Type      | Business  |
| Status    | Active    |

## **Community Information**

|         |                 |
|---------|-----------------|
| Address | 10355 Whyte Ave |
| Area    | Edmonton        |



|             |            |
|-------------|------------|
| Subdivision | Strathcona |
| City        | Edmonton   |
| County      | ALBERTA    |
| Province    | AB         |
| Postal Code | T6T 1Z9    |

### **Additional Information**

|                |                 |
|----------------|-----------------|
| Date Listed    | June 27th, 2025 |
| Days on Market | 59              |
| Zoning         | Zone 15         |

DATA IS DEEMED RELIABLE BUT IS NOT GUARANTEED ACCURATE BY THE REALTORS® ASSOCIATION OF EDMONTON. COPYRIGHT 2025 BY THE REALTORS® ASSOCIATION OF EDMONTON. ALL RIGHTS RESERVED. Trademarks are owned or controlled by the Canadian Real Estate Association (CREA) and identify real estate professionals who are members of CREA (REALTOR®, REALTORS®) and/or the quality of services they provide (MLS®, Multiple Listing Service®)

Listing information last updated on August 24th, 2025 at 11:47pm MDT