

## \$630,000 - 4 53503 Range Road 175, Rural Yellowhead

MLS® #E4444058

**\$630,000**

6 Bedroom, 3.50 Bathroom, 2,700 sqft

Rural on 7.93 Acres

None, Rural Yellowhead, AB

This 6 bedroom, 3.5 baths, big bonus room and 2 dens home built on a 7.93 acres less than 10 mins from Edson. This home offers comfort and tranquility with the modern features in it.

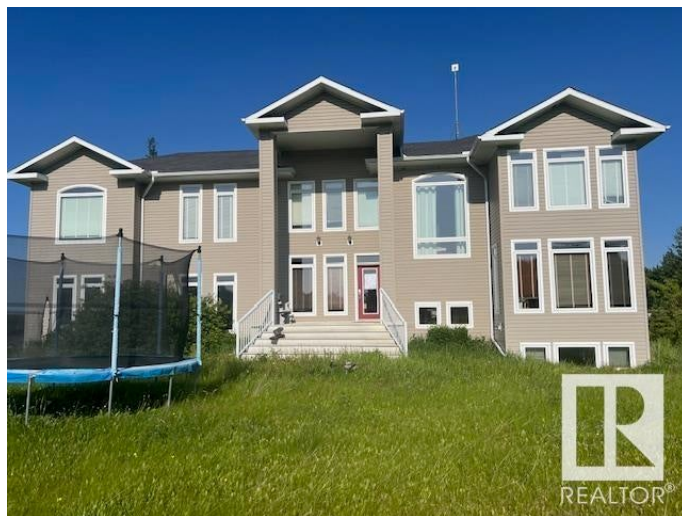
Built in 2005

### Essential Information

MLS® #	E4444058
Price	\$630,000
Bedrooms	6
Bathrooms	3.50
Full Baths	3
Half Baths	1
Square Footage	2,700
Acres	7.93
Year Built	2005
Type	Rural
Sub-Type	Detached Single Family
Style	2 Storey
Status	Active

### Community Information

Address	4 53503 Range Road 175
Area	Rural Yellowhead
Subdivision	None
City	Rural Yellowhead



County	ALBERTA
Province	AB
Postal Code	T7E 3L7

### **Amenities**

Features	See Remarks
Parking Spaces	2

### **Interior**

Interior Features	ensuite bathroom
Heating	See Remarks
Stories	3
Has Basement	Yes
Basement	Full, Finished

### **Exterior**

Exterior	Wood
Exterior Features	Flat Site, Not Fenced, Paved Lane, See Remarks
Construction	Wood
Foundation	Concrete Perimeter

### **Additional Information**

Date Listed	June 24th, 2025
Days on Market	65
Zoning	Zone 70

DATA IS DEEMED RELIABLE BUT IS NOT GUARANTEED ACCURATE BY THE REALTORS® ASSOCIATION OF EDMONTON. COPYRIGHT 2025 BY THE REALTORS® ASSOCIATION OF EDMONTON. ALL RIGHTS RESERVED. Trademarks are owned or controlled by the Canadian Real Estate Association (CREA) and identify real estate professionals who are members of CREA (REALTOR®, REALTORS®) and/or the quality of services they provide (MLS®, Multiple Listing Service®)

Listing information last updated on August 28th, 2025 at 8:17pm MDT