

\$629,900 - 8943 146a Street, Edmonton

MLS® #E4442575

\$629,900

4 Bedroom, 3.00 Bathroom, 1,404 sqft

Single Family on 0.00 Acres

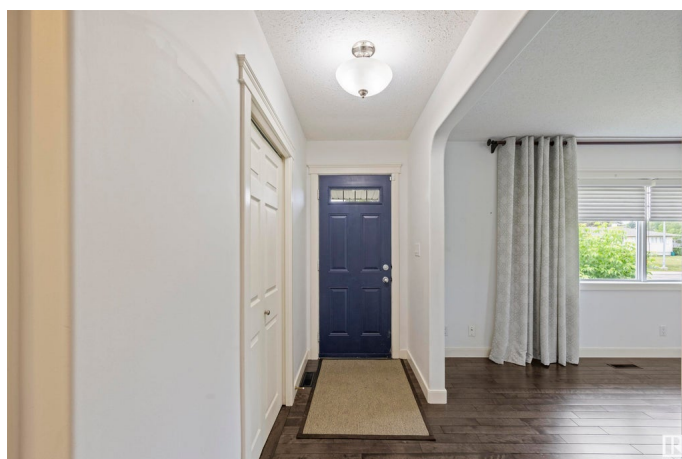
Parkview, Edmonton, AB

Fully updated 3-bedroom bungalow in the heart of Parkviewâ€”perfect for a young family! This 1400+ sq. ft. home features a spacious kitchen with gas stove, island with second sink, pantry, and a charming dining area plus a built-in desk. The ownerâ€™s suite offers a vaulted ceiling, walk-in closet, and 4-piece ensuite including jacuzzi tub. Enjoy a fully finished basement with large rec room, gas fireplace, additional bedroom, 3-piece bath, and laundry room. The low-maintenance backyard includes a pergola and a double detached garage (2006). Located in a family-friendly neighborhood with great schools, parks, and a true community feelâ€”come check it out!

Built in 1956

Essential Information

MLS® #	E4442575
Price	\$629,900
Bedrooms	4
Bathrooms	3.00
Full Baths	3
Square Footage	1,404
Acres	0.00
Year Built	1956
Type	Single Family



Sub-Type	Detached Single Family
Style	Bungalow
Status	Active

Community Information

Address	8943 146a Street
Area	Edmonton
Subdivision	Parkview
City	Edmonton
County	ALBERTA
Province	AB
Postal Code	T5R 0X2

Amenities

Amenities	Air Conditioner, Detectors Smoke
Parking Spaces	4
Parking	Double Garage Detached

Interior

Interior Features	ensuite bathroom
Appliances	Dishwasher-Built-In, Dryer, Garage Opener, Microwave Hood Fan, Refrigerator, Stove-Gas, Washer, Window Coverings
Heating	Forced Air-1, Natural Gas
Fireplace	Yes
Fireplaces	Mantel
Stories	2
Has Basement	Yes
Basement	Full, Finished

Exterior

Exterior	Wood, Stone, Hardie Board Siding
Exterior Features	Back Lane, Fenced, Landscaped, No Through Road, Playground Nearby, Public Transportation, Schools, Shopping Nearby
Roof	Asphalt Shingles
Construction	Wood, Stone, Hardie Board Siding
Foundation	Concrete Perimeter

School Information

Elementary	Parkview School
------------	-----------------

Middle	Parkview School
High	Ross Sheppard School

Additional Information

Date Listed	June 15th, 2025
Days on Market	1
Zoning	Zone 10

DATA IS DEEMED RELIABLE BUT IS NOT GUARANTEED ACCURATE BY THE REALTORS® ASSOCIATION OF EDMONTON. COPYRIGHT 2025 BY THE REALTORS® ASSOCIATION OF EDMONTON. ALL RIGHTS RESERVED. Trademarks are owned or controlled by the Canadian Real Estate Association (CREA) and identify real estate professionals who are members of CREA (REALTOR®, REALTORS®) and/or the quality of services they provide (MLS®, Multiple Listing Service®)

Listing information last updated on June 16th, 2025 at 4:02pm MDT