

\$550,000 - 950 Ormsby Wynd, Edmonton

MLS® #E4440398

\$550,000

4 Bedroom, 4.00 Bathroom, 1,636 sqft

Single Family on 0.00 Acres

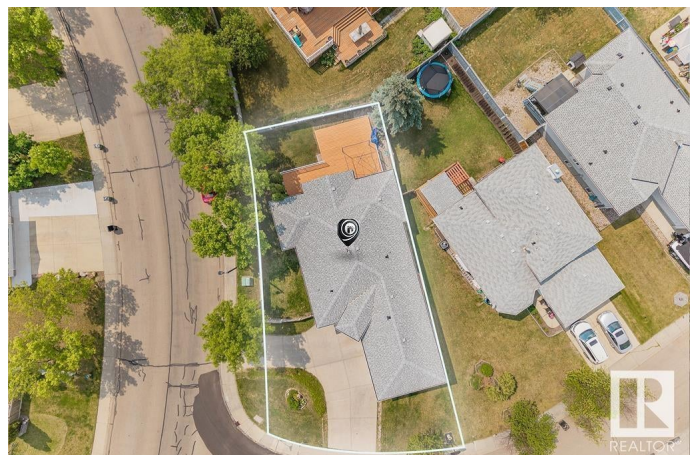
Ormsby Place, Edmonton, AB

This spacious Bungalow on a corner lot, ideal for Comfortable Living and located with ease to all amenities on the West End of Edmonton including West Edmonton Mall, Grocery Stores and Public Transportation. The Back yard has a Large Deck -Perfect for entertaining and enjoying the Southern Sun. Double Car Garage with a circle driveway for more parking allows for ease of parking and guests. The open concept kitchen and open Living Room leave lots of living space. The front Den/Office is nice for private work or an extra guest room. Main Floor Washer and Dryer as well as an additional set down stairs. The Primary Bedroom has plenty of space with a spacious ensuite that includes a large walk-in shower that is wheelchair accessible as well. Each bedroom downstairs has a 2 piece ensuite as well as a 4 pc Bath down stairs. Plenty of great features in this home.

Built in 1995

Essential Information

| | |
|------------|-----------|
| MLS® # | E4440398 |
| Price | \$550,000 |
| Bedrooms | 4 |
| Bathrooms | 4.00 |
| Full Baths | 3 |
| Half Baths | 2 |



| | |
|----------------|------------------------|
| Square Footage | 1,636 |
| Acres | 0.00 |
| Year Built | 1995 |
| Type | Single Family |
| Sub-Type | Detached Single Family |
| Style | Bungalow |
| Status | Active |

Community Information

| | |
|-------------|-----------------|
| Address | 950 Ormsby Wynd |
| Area | Edmonton |
| Subdivision | Ormsby Place |
| City | Edmonton |
| County | ALBERTA |
| Province | AB |
| Postal Code | T5T 6B1 |

Amenities

| | |
|-----------|------------------------|
| Amenities | See Remarks |
| Parking | Double Garage Attached |

Interior

| | |
|-------------------|--|
| Interior Features | ensuite bathroom |
| Appliances | Air Cleaner-Electronic, Dishwasher-Built-In, Garage Control, Garage Opener, Oven-Built-In, Refrigerator, Stove-Countertop Electric, Dryer-Two, Washers-Two |
| Heating | Forced Air-1, Natural Gas |
| Fireplace | Yes |
| Fireplaces | Glass Door |
| Stories | 2 |
| Has Basement | Yes |
| Basement | Full, Finished |

Exterior

| | |
|-------------------|--------------------|
| Exterior | Wood, Stucco |
| Exterior Features | See Remarks |
| Roof | Asphalt Shingles |
| Construction | Wood, Stucco |
| Foundation | Concrete Perimeter |

Additional Information

Date Listed June 4th, 2025
Days on Market 45
Zoning Zone 20

DATA IS DEEMED RELIABLE BUT IS NOT GUARANTEED ACCURATE BY THE REALTORS® ASSOCIATION OF EDMONTON. COPYRIGHT 2025 BY THE REALTORS® ASSOCIATION OF EDMONTON. ALL RIGHTS RESERVED.Trademarks are owned or controlled by the Canadian Real Estate Association (CREA) and identify real estate professionals who are members of CREA (REALTOR®, REALTORS®) and/or the quality of services they provide (MLS®, Multiple Listing Service®)
Listing information last updated on July 19th, 2025 at 1:17am MDT