

\$539,900 - 13 Conifer Crescent, Rural Lac Ste. Anne County

MLS® #E4440281

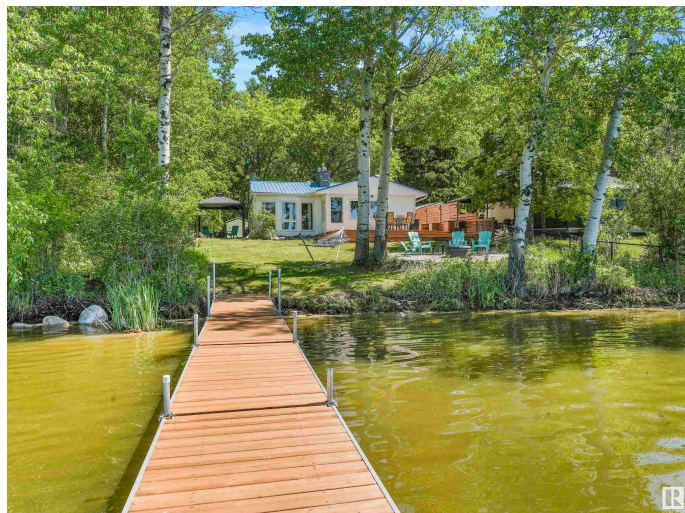
\$539,900

2 Bedroom, 1.00 Bathroom, 823 sqft

Rural on 0.18 Acres

Silver Sands, Rural Lac Ste. Anne County, AB

Just in time for summer! Escape to this turn-key, fully furnished waterfront cabin on Lake Isle in the peaceful community of Silver Sands. Fully renovated and move-in ready, this charming retreat offers 2 cozy bedrooms, a 4-piece bathroom, and a full kitchen with sleek stainless steel appliances. The dining and living areas boast stunning lake views, with a bay window and gas fireplace adding comfort and charm. Step outside to a spacious wrap-around deck, perfect for soaking in the serene surroundings. Enjoy lakeside evenings by the fire pit or on your private dock (included in the sale). A bunkhouse and outhouse provide extra space for guests, plus there's a storage shed for all your gear. Also included is a large quonset that's perfect for storing your boat and other recreational equipment. Just a 13-minute walk to the Silver Sands golf course, this getaway has everything you need for relaxed lakeside living.



Built in 1964

Essential Information

MLS® #	E4440281
Price	\$539,900
Bedrooms	2

Bathrooms	1.00
Full Baths	1
Square Footage	823
Acres	0.18
Year Built	1964
Type	Rural
Sub-Type	Detached Single Family
Style	Bungalow
Status	Active

Community Information

Address	13 Conifer Crescent
Area	Rural Lac Ste. Anne County
Subdivision	Silver Sands
City	Rural Lac Ste. Anne County
County	ALBERTA
Province	AB
Postal Code	T0E 1H0

Amenities

Features	Deck, Fire Pit, Gazebo, See Remarks
----------	-------------------------------------

Interior

Heating	Forced Air-1, Natural Gas
Fireplace	Yes
Stories	1
Has Basement	Yes
Basement	None, No Basement

Exterior

Exterior	Wood
Exterior Features	Backs Onto Lake, Golf Nearby, Lake Access Property, Lake View, Playground Nearby
Construction	Wood
Foundation	Concrete Perimeter

Additional Information

Date Listed	June 4th, 2025
Days on Market	12

Zoning

Zone 75

DATA IS DEEMED RELIABLE BUT IS NOT GUARANTEED ACCURATE BY THE REALTORS® ASSOCIATION OF EDMONTON. COPYRIGHT 2025 BY THE REALTORS® ASSOCIATION OF EDMONTON. ALL RIGHTS RESERVED. Trademarks are owned or controlled by the Canadian Real Estate Association (CREA) and identify real estate professionals who are members of CREA (REALTOR®, REALTORS®) and/or the quality of services they provide (MLS®, Multiple Listing Service®)

Listing information last updated on June 16th, 2025 at 5:02pm MDT