

## \$550,000 - 84 Windrose Drive Drive, Leduc

MLS® #E4439416

**\$550,000**

4 Bedroom, 3.00 Bathroom, 1,350 sqft

Single Family on 0.00 Acres

Windrose, Leduc, AB

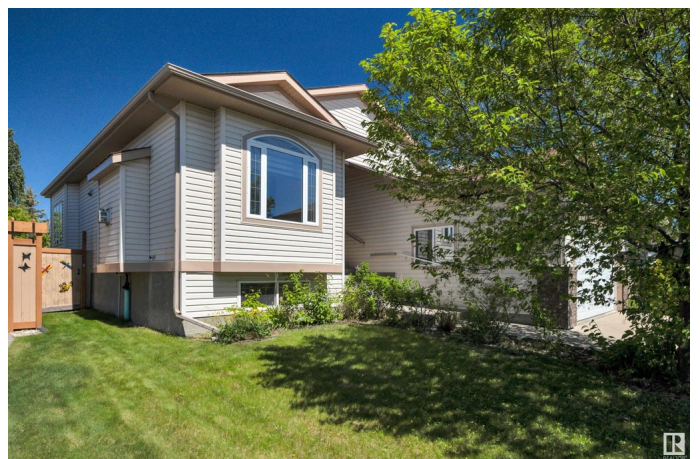
Welcome to your new home in the beautiful community of Windrose! This spacious 4-bedroom, 3-bathroom raised bungalow is ideally located right across the street from a scenic park and pond. Offering over 2,500 sq. ft. of finished living space, this home combines comfort, functionality, and charm. Step inside to a large foyer that opens into a bright and inviting living room with a cozy gas fireplace. The kitchen offers abundant counter space and storage, along with a generous dining area bathed in natural light from a solar tube overhead. The main floor includes convenient laundry, a double attached garage, the primary suite with a huge walk-in closet and 4-piece ensuite, and an additional bedroom—perfect for guests or a home office. The fully finished basement features a massive recreation room, two more bedrooms, and a full bathroom—ideal for growing families or entertaining. Enjoy sunny days in the beautifully landscaped backyard, complete with a large deck that's perfect for relaxing or hosting!

Built in 2006

### Essential Information

MLS® # E4439416

Price \$550,000



Bedrooms	4
Bathrooms	3.00
Full Baths	3
Square Footage	1,350
Acres	0.00
Year Built	2006
Type	Single Family
Sub-Type	Detached Single Family
Style	Bungalow
Status	Active

### **Community Information**

Address	84 Windrose Drive Drive
Area	Leduc
Subdivision	Windrose
City	Leduc
County	ALBERTA
Province	AB
Postal Code	T9E 8N3

### **Amenities**

Amenities	No Animal Home, No Smoking Home
Parking	Double Garage Attached

### **Interior**

Interior Features	ensuite bathroom
Appliances	Dishwasher-Built-In, Dryer, Garage Control, Microwave Hood Fan, Refrigerator, Storage Shed, Stove-Electric, Washer, Window Coverings
Heating	Forced Air-1, Natural Gas
Fireplace	Yes
Fireplaces	Mantel
Stories	2
Has Basement	Yes
Basement	Full, Finished

### **Exterior**

Exterior	Wood, Vinyl
Exterior Features	Airport Nearby, Fenced, Picnic Area, Playground Nearby, Schools, Shopping Nearby

Roof	Asphalt Shingles
Construction	Wood, Vinyl
Foundation	Concrete Perimeter

**Additional Information**

Date Listed	May 30th, 2025
Days on Market	10
Zoning	Zone 81

DATA IS DEEMED RELIABLE BUT IS NOT GUARANTEED ACCURATE BY THE REALTORS® ASSOCIATION OF EDMONTON. COPYRIGHT 2025 BY THE REALTORS® ASSOCIATION OF EDMONTON. ALL RIGHTS RESERVED.Trademarks are owned or controlled by the Canadian Real Estate Association (CREA) and identify real estate professionals who are members of CREA (REALTOR®, REALTORS®) and/or the quality of services they provide (MLS®, Multiple Listing Service®)

Listing information last updated on June 8th, 2025 at 11:32pm MDT