

\$489,900 - 48 Longview Crescent, St. Albert

MLS® #E4439120

\$489,900

4 Bedroom, 2.50 Bathroom, 1,096 sqft

Single Family on 0.00 Acres

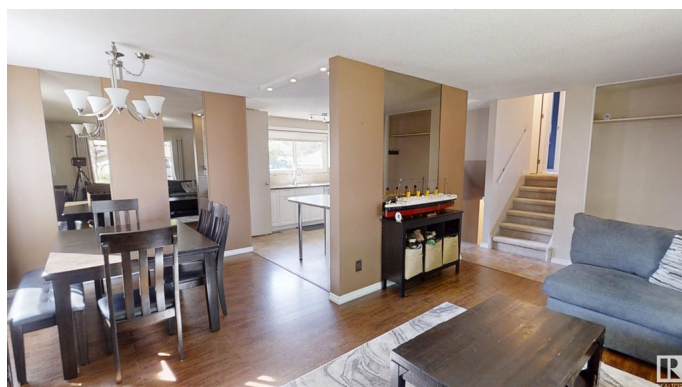
Lacombe Park, St. Albert, AB

Impeccably Maintained Home in Lacombe Park This charming home in quiet Lacombe Park is a must-see! The main level features spacious living and dining rooms with laminate flooring. The updated open kitchen boasts plenty of cabinet space, newer countertops, and a stylish backsplash. Upstairs, find three bedrooms, including a spacious primary with a 2-piece ensuite, plus a renovated 4-piece bathroom. The third level offers a 4th bedroom, 3-piece bath, and cozy family room with a wood-burning fireplace. The finished basement provides a large rec room, perfect for the kids! The gorgeous backyard with deck has room to entertain on the hot summer nights, while the oversized double detached garage (28 x 26) offers ample storage. This well-maintained home is perfect for families â€“ donâ€™t miss out!

Built in 1978

Essential Information

MLS® #	E4439120
Price	\$489,900
Bedrooms	4
Bathrooms	2.50
Full Baths	2
Half Baths	1
Square Footage	1,096



Acres	0.00
Year Built	1978
Type	Single Family
Sub-Type	Detached Single Family
Style	4 Level Split
Status	Active

Community Information

Address	48 Longview Crescent
Area	St. Albert
Subdivision	Lacombe Park
City	St. Albert
County	ALBERTA
Province	AB
Postal Code	T8N 2W2

Amenities

Amenities	Deck, Front Porch, Vinyl Windows
Parking Spaces	5
Parking	Double Garage Detached, Front Drive Access, Over Sized

Interior

Interior Features	ensuite bathroom
Appliances	Dishwasher-Built-In, Dryer, Garage Control, Garage Opener, Microwave Hood Fan, Oven-Microwave, Refrigerator, Stove-Electric, Vacuum Systems, Washer, Water Softener, Window Coverings
Heating	Forced Air-1, Natural Gas
Fireplace	Yes
Fireplaces	Mantel, Tile Surround
Stories	4
Has Basement	Yes
Basement	Full, Finished

Exterior

Exterior	Wood, Brick, Stucco
Exterior Features	Fenced, Golf Nearby, Landscaped, No Back Lane, Playground Nearby, Schools, Shopping Nearby
Roof	Asphalt Shingles
Construction	Wood, Brick, Stucco

Foundation Concrete Perimeter

School Information

Elementary RonaldHarvey/BerthaKennedy
Middle RonaldHarvey/BerthaKennedy
High Bellerose/St. Albert

Additional Information

Date Listed May 29th, 2025
Days on Market 10
Zoning Zone 24

DATA IS DEEMED RELIABLE BUT IS NOT GUARANTEED ACCURATE BY THE REALTORS® ASSOCIATION OF EDMONTON. COPYRIGHT 2025 BY THE REALTORS® ASSOCIATION OF EDMONTON. ALL RIGHTS RESERVED.Trademarks are owned or controlled by the Canadian Real Estate Association (CREA) and identify real estate professionals who are members of CREA (REALTOR®, REALTORS®) and/or the quality of services they provide (MLS®, Multiple Listing Service®)
Listing information last updated on June 8th, 2025 at 2:02pm MDT