

\$529,000 - 1105 31 Street, Edmonton

MLS® #E4438904

\$529,000

5 Bedroom, 3.50 Bathroom, 1,671 sqft

Single Family on 0.00 Acres

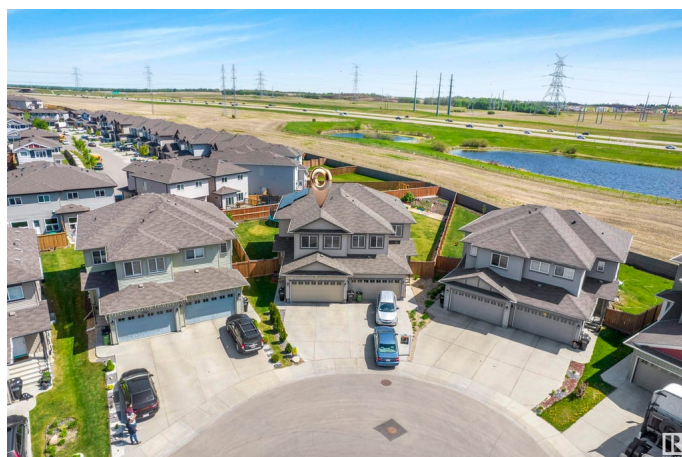
Laurel, Edmonton, AB

Welcome to this stunning front-attached Double car Garage duplex in the desirable Laurel community, offering over 2,000 sq ft of total living space. Built in 2018, this home sits on a Huge Pie-shaped lot with a beautiful view and features a spacious deck, Gazebo, and a well-kept backyardâ€”perfect for entertaining or relaxing. Inside boasts a stylish kitchen and an open-concept layout. Offering 5 bedrooms and 3.5 bathrooms, the upper floor includes 3 bedrooms and 2 full baths, while the main level has a convenient half bath. The fully finished basement, completed with City Permits and Inspections, adds 2 more bedrooms and a full bathroomâ€”ideal for guests or extended family. Equipped with 13 SOLAR Pannels, this home is energy-efficient and helps lower monthly utility bills. A rare opportunity to own a well-kept, spacious home on one of the largest lots in theÃ¢ neighborhood!

Built in 2018

Essential Information

MLS® #	E4438904
Price	\$529,000
Bedrooms	5
Bathrooms	3.50
Full Baths	3
Half Baths	1



Square Footage	1,671
Acres	0.00
Year Built	2018
Type	Single Family
Sub-Type	Half Duplex
Style	2 Storey
Status	Active

Community Information

Address	1105 31 Street
Area	Edmonton
Subdivision	Laurel
City	Edmonton
County	ALBERTA
Province	AB
Postal Code	T6T 2C7

Amenities

Amenities	Deck, Gazebo, Solar Equipment
Parking	Double Garage Attached

Interior

Interior Features	ensuite bathroom
Appliances	Dishwasher-Built-In, Dryer, Garage Opener, Hood Fan, Refrigerator, Stove-Electric, Washer, Window Coverings
Heating	Forced Air-1, Natural Gas
Stories	3
Has Basement	Yes
Basement	Full, Finished

Exterior

Exterior	Wood, Asphalt
Exterior Features	Airport Nearby, Backs Onto Lake, Cul-De-Sac, Low Maintenance Landscape, Playground Nearby, Schools, Shopping Nearby, Partially Fenced
Roof	Asphalt Shingles
Construction	Wood, Asphalt
Foundation	Concrete Perimeter

Additional Information

Date Listed May 28th, 2025

Days on Market 22

Zoning Zone 30

DATA IS DEEMED RELIABLE BUT IS NOT GUARANTEED ACCURATE BY THE REALTORS® ASSOCIATION OF EDMONTON. COPYRIGHT 2025 BY THE REALTORS® ASSOCIATION OF EDMONTON. ALL RIGHTS RESERVED. Trademarks are owned or controlled by the Canadian Real Estate Association (CREA) and identify real estate professionals who are members of CREA (REALTOR®, REALTORS®) and/or the quality of services they provide (MLS®, Multiple Listing Service®)

Listing information last updated on June 19th, 2025 at 1:32pm MDT