

## \$159,900 - 1152 Saddleback Road, Edmonton

MLS® #E4438208

**\$159,900**

2 Bedroom, 1.00 Bathroom, 924 sqft

Condo / Townhouse on 0.00 Acres

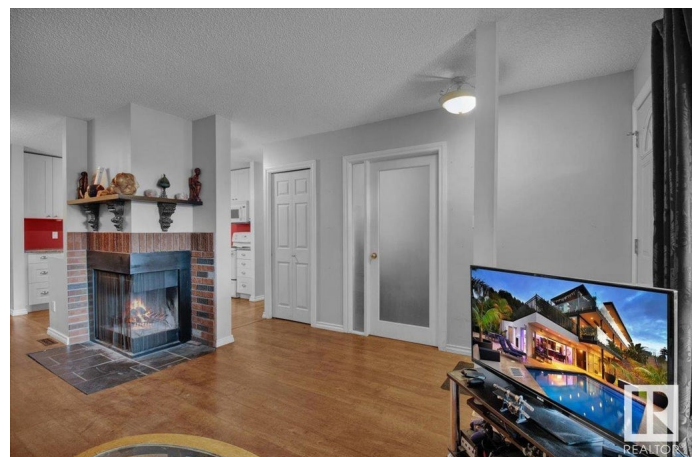
Skyrattler, Edmonton, AB

Welcome to Hunters run off Saddleback road where you will find this charming carriage-style ground floor unit located in the highly sought-after community of Skyrattler. Offering a bright, open layout with a cozy corner fireplace, this well-kept home features an upgraded kitchen with modern cabinets and countertops, a large pantry, two convenient storage areas, and in-suite laundry. The newly renovated bathroom includes updated flooring and a stylish tile tub surround. Recent updates throughout the home include new flooring, furnace, & shingles. Enjoy unbeatable surroundings with Whitemud Creek Ravine on one side and a large green space and the Skyrattler playground on the other, it's the perfect balance of nature and convenience. Ideal for first-time buyers, students, or investors.

Built in 1978

### Essential Information

MLS® #	E4438208
Price	\$159,900
Bedrooms	2
Bathrooms	1.00
Full Baths	1
Square Footage	924
Acres	0.00



Year Built	1978
Type	Condo / Townhouse
Sub-Type	Carriage
Style	Single Level Apartment
Status	Active

### Community Information

Address	1152 Saddleback Road
Area	Edmonton
Subdivision	Skyrattler
City	Edmonton
County	ALBERTA
Province	AB
Postal Code	T6J 4Z4

### Amenities

Amenities	Front Porch, No Animal Home, No Smoking Home, Parking-Visitor, Storage-In-Suite
Parking Spaces	1
Parking	Stall

### Interior

Appliances	Dishwasher-Built-In, Dryer, Microwave Hood Fan, Refrigerator, Stove-Electric, Washer
Heating	Forced Air-1, Natural Gas
Fireplace	Yes
Fireplaces	Corner
# of Stories	2
Stories	1
Has Basement	Yes
Basement	None, No Basement

### Exterior

Exterior	Wood, Vinyl
Exterior Features	Fruit Trees/Shrubs, Landscaped, Park/Reserve, Playground Nearby, Schools, Shopping Nearby
Roof	Asphalt Shingles
Construction	Wood, Vinyl
Foundation	Concrete Perimeter

**Additional Information**

Date Listed	May 23rd, 2025
Days on Market	7
Zoning	Zone 16
Condo Fee	\$348

DATA IS DEEMED RELIABLE BUT IS NOT GUARANTEED ACCURATE BY THE REALTORS® ASSOCIATION OF EDMONTON. COPYRIGHT 2025 BY THE REALTORS® ASSOCIATION OF EDMONTON. ALL RIGHTS RESERVED.Trademarks are owned or controlled by the Canadian Real Estate Association (CREA) and identify real estate professionals who are members of CREA (REALTOR®, REALTORS®) and/or the quality of services they provide (MLS®, Multiple Listing Service®)

Listing information last updated on May 30th, 2025 at 6:47am MDT