

## \$359,500 - 6637 Poplar Drive, Grande Prairie

MLS® #E4438143

### \$359,500

3 Bedroom, 1.50 Bathroom, 1,250 sqft  
Single Family on 0.00 Acres

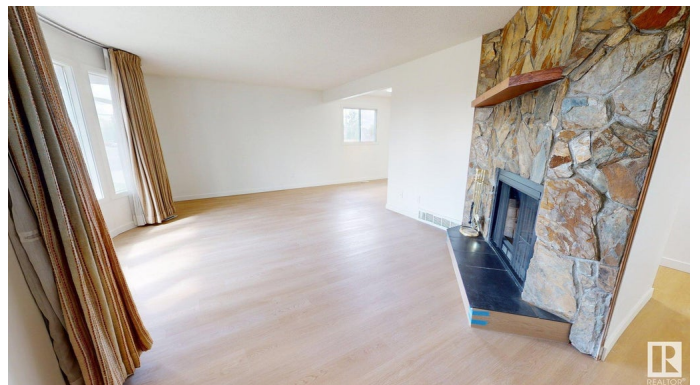
Country Club Estates\_GRPR, Grande Prairie,  
AB

Welcome to this beautifully maintained 1,200 sq ft (approx.) bungalow, ideally situated on a spacious corner lot in Poplar Drive- a quiet, family-friendly neighborhood. Lovingly cared for by its longtime ownersâ€™an elderly coupleâ€™this home has never housed pets, children, or smokers. The main floor features 3 spacious bedrooms and 1.5 bathrooms, including a convenient ensuite half-bath. Recent renovations include brand-new flooring throughout and a modern kitchen upgrade with new cabinets and countertopsâ€™move-in ready and perfect for comfortable living. A separate side entrance leads to a partially developed basement thatâ€™s already framed for two additional bedrooms. With plumbing and framing started, the space is ideal for a future suite, guest area, or custom basement developmentâ€™your imagination is the limit! Step outside to a detached single garage, perfect for winter parking or extra storage. Being on a corner lot provides additional yard space and privacy.

Built in 1981

### Essential Information

MLS® #	E4438143
Price	\$359,500



Bedrooms	3
Bathrooms	1.50
Full Baths	1
Half Baths	1
Square Footage	1,250
Acres	0.00
Year Built	1981
Type	Single Family
Sub-Type	Detached Single Family
Style	Bungalow
Status	Active

### Community Information

Address	6637 Poplar Drive
Area	Grande Prairie
Subdivision	Country Club Estates_GRPR
City	Grande Prairie
County	ALBERTA
Province	AB
Postal Code	T8W 1C8

### Amenities

Amenities	Carbon Monoxide Detectors, Closet Organizers, No Animal Home, No Smoking Home
Parking	Front Drive Access, Single Garage Detached

### Interior

Interior Features	ensuite bathroom
Appliances	Dishwasher-Built-In, Dryer, Hood Fan, Refrigerator, Stove-Electric, Washer, Window Coverings
Heating	Forced Air-1, Natural Gas
Fireplace	Yes
Fireplaces	Brick Facing
Stories	1
Has Basement	Yes
Basement	Full, Partially Finished

### Exterior

Exterior	Wood, Vinyl
----------	-------------

Exterior Features	Corner Lot, Fenced, Landscaped, Low Maintenance Landscape, Playground Nearby, Public Transportation, Schools, Shopping Nearby
Roof	Asphalt Shingles
Construction	Wood, Vinyl
Foundation	Concrete Perimeter

**Additional Information**

Date Listed	May 23rd, 2025
Days on Market	24
Zoning	Zone 70

DATA IS DEEMED RELIABLE BUT IS NOT GUARANTEED ACCURATE BY THE REALTORS® ASSOCIATION OF EDMONTON. COPYRIGHT 2025 BY THE REALTORS® ASSOCIATION OF EDMONTON. ALL RIGHTS RESERVED.Trademarks are owned or controlled by the Canadian Real Estate Association (CREA) and identify real estate professionals who are members of CREA (REALTOR®, REALTORS®) and/or the quality of services they provide (MLS®, Multiple Listing Service®)

Listing information last updated on June 16th, 2025 at 3:02pm MDT