

\$649,000 - 449 Conroy Crescent, Edmonton

MLS® #E4435874

\$649,000

4 Bedroom, 2.50 Bathroom, 1,969 sqft

Single Family on 0.00 Acres

Cavanagh, Edmonton, AB

Discover Your Dream Home in Cavanagh with 4 Bedrooms on Upper Level. This beautifully designed and upgraded single-family home offers 1,950+ sqft. of thoughtfully planned living space, perfect for modern family living. The main floor features an spacious living area, a formal dining space, a stylish kitchen with an additional SPICE KITCHEN, and a convenient half bath. Upstairs, you'll find three generously sized bedrooms and a primary suite with a luxurious ensuite bathroom, an additional full bathroom, and a versatile bonus room ideal for relaxation or work. Laundry room is also upstairs for extra convenience. Situated on a landscaped and fenced lot, this home boasts incredible privacy with no back neighbours and a pathway on one side, leaving you with only one direct neighbour. Located in the sought-after Cavanagh neighbourhood, you'll enjoy easy access to schools, parks, shopping centers, and public transportation, making it perfect for families.

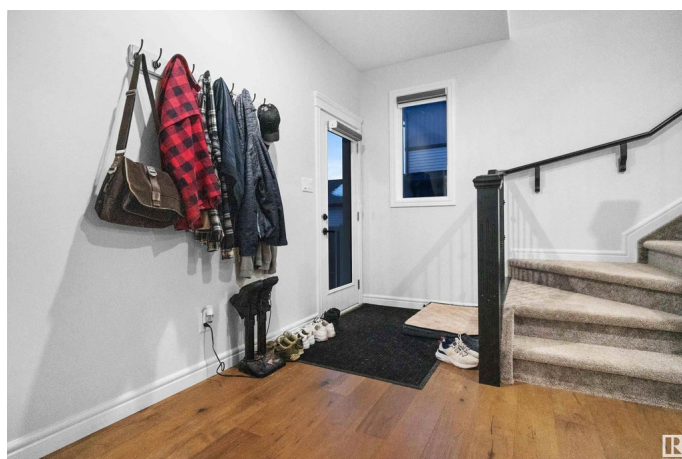
Built in 2022

Essential Information

MLS® # E4435874

Price \$649,000

Bedrooms 4



Bathrooms	2.50
Full Baths	2
Half Baths	1
Square Footage	1,969
Acres	0.00
Year Built	2022
Type	Single Family
Sub-Type	Detached Single Family
Style	2 Storey
Status	Active

Community Information

Address	449 Conroy Crescent
Area	Edmonton
Subdivision	Cavanagh
City	Edmonton
County	ALBERTA
Province	AB
Postal Code	T6W 5A9

Amenities

Amenities	See Remarks
Parking	Double Garage Attached

Interior

Interior Features	ensuite bathroom
Appliances	Dishwasher-Built-In, Dryer, Garage Control, Garage Opener, Oven-Built-In, Oven-Microwave, Refrigerator, Stove-Countertop Gas, Stove-Electric, Washer, Window Coverings
Heating	Forced Air-1, Natural Gas
Stories	2
Has Basement	Yes
Basement	Full, Unfinished

Exterior

Exterior	Wood, Vinyl
Exterior Features	Fenced, Landscaped, Playground Nearby, Public Transportation, Schools, Shopping Nearby
Roof	Asphalt Shingles

Construction	Wood, Vinyl
Foundation	Concrete Perimeter

Additional Information

Date Listed	May 11th, 2025
Days on Market	2
Zoning	Zone 55

DATA IS DEEMED RELIABLE BUT IS NOT GUARANTEED ACCURATE BY THE REALTORS® ASSOCIATION OF EDMONTON. COPYRIGHT 2025 BY THE REALTORS® ASSOCIATION OF EDMONTON. ALL RIGHTS RESERVED.Trademarks are owned or controlled by the Canadian Real Estate Association (CREA) and identify real estate professionals who are members of CREA (REALTOR®, REALTORS®) and/or the quality of services they provide (MLS®, Multiple Listing Service®)

Listing information last updated on May 13th, 2025 at 6:32pm MDT