

\$599,500 - 4916 50 Avenue, Rural Lac Ste. Anne County

MLS® #E4435811

\$599,500

3 Bedroom, 2.00 Bathroom, 1,735 sqft

Rural on 0.15 Acres

Alberta Beach, Rural Lac Ste. Anne County,
AB

Whisper Creek Log Home set on Beachfront Property. Unique 2x6 construction with real Whisper Creek Log finishing on the exterior recently refinished. Feature log wall overlooking the lake, large Timber log finishing the interior. Open floor plan with cathedral ceilings, cozy fireplace in the Livingroom, open to the gourmet style kitchen with centre island, quartz countertops, Sub Zero refrigerator and Viking 6 burner gas stove with convection oven. Energy efficient home with upgraded insulation and heated flooring throughout. 20"X20" porcelain tile flooring that holds the heat in the winter and keeps you cool in the summer. Steam Shower on main floor and aerator tub upstairs. Two spacious bedrooms on the main floor and a large master bedroom upstairs with ensuite and private balcony. Sunset views throughout the home through the wall of windows overlooking the lake or sit on the 12' covered, timber accented deck.

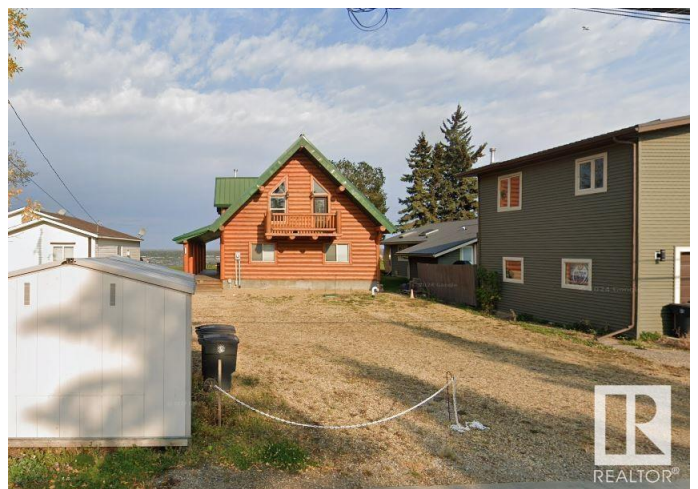
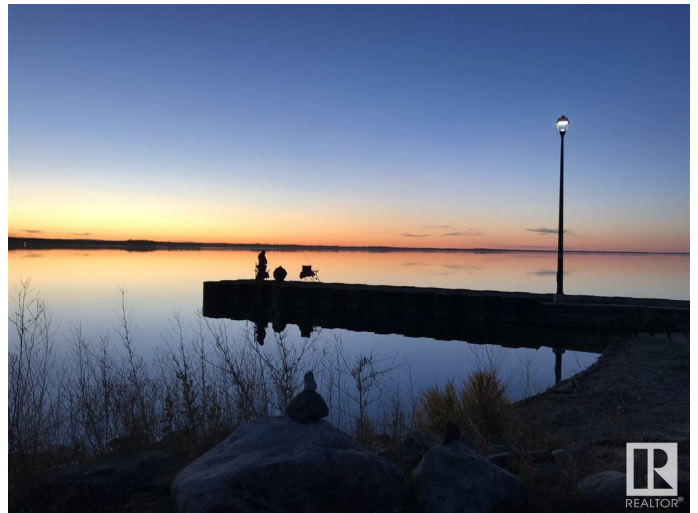
Built in 2008

Essential Information

MLS® # E4435811

Price \$599,500

Bedrooms 3



| | |
|----------------|------------------------|
| Bathrooms | 2.00 |
| Full Baths | 2 |
| Square Footage | 1,735 |
| Acres | 0.15 |
| Year Built | 2008 |
| Type | Rural |
| Sub-Type | Detached Single Family |
| Style | 1 and Half Storey |
| Status | Active |

Community Information

| | |
|-------------|----------------------------|
| Address | 4916 50 Avenue |
| Area | Rural Lac Ste. Anne County |
| Subdivision | Alberta Beach |
| City | Rural Lac Ste. Anne County |
| County | ALBERTA |
| Province | AB |
| Postal Code | T0E 0A0 |

Amenities

| | |
|----------------|-------------------|
| Features | Crawl Space, Deck |
| Parking Spaces | 6 |

Interior

| | |
|-------------------|-----------------------------------|
| Interior Features | ensuite bathroom |
| Heating | In Floor Heat System, Natural Gas |
| Fireplace | Yes |
| Stories | 2 |
| Has Basement | Yes |
| Basement | None, No Basement |

Exterior

| | |
|-------------------|---|
| Exterior | Wood |
| Exterior Features | Lake Access Property, Recreation Use, Waterfront Property |
| Construction | Wood |
| Foundation | Insulated Concrete Form |

Additional Information

| | |
|-------------|----------------|
| Date Listed | May 10th, 2025 |
|-------------|----------------|

Days on Market 3

Zoning Zone 71

DATA IS DEEMED RELIABLE BUT IS NOT GUARANTEED ACCURATE BY THE REALTORS® ASSOCIATION OF EDMONTON. COPYRIGHT 2025 BY THE REALTORS® ASSOCIATION OF EDMONTON. ALL RIGHTS RESERVED. Trademarks are owned or controlled by the Canadian Real Estate Association (CREA) and identify real estate professionals who are members of CREA (REALTOR®, REALTORS®) and/or the quality of services they provide (MLS®, Multiple Listing Service®)

Listing information last updated on May 13th, 2025 at 1:32pm MDT