

## \$429,900 - 8 Beaverhill View Crescent, Tofield

MLS® #E4435786

**\$429,900**

4 Bedroom, 3.50 Bathroom, 1,901 sqft

Single Family on 0.00 Acres

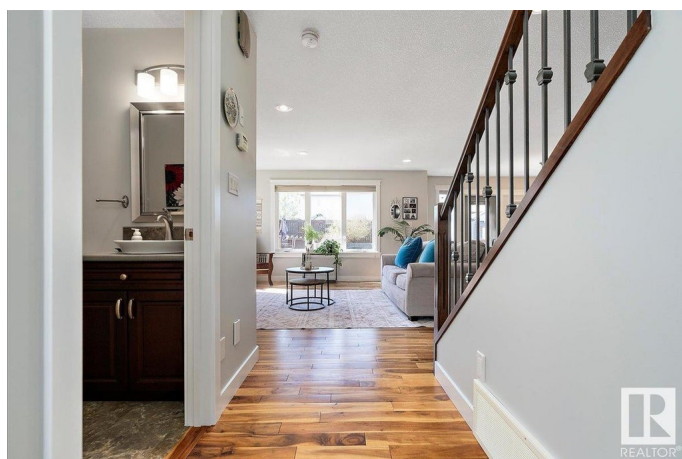
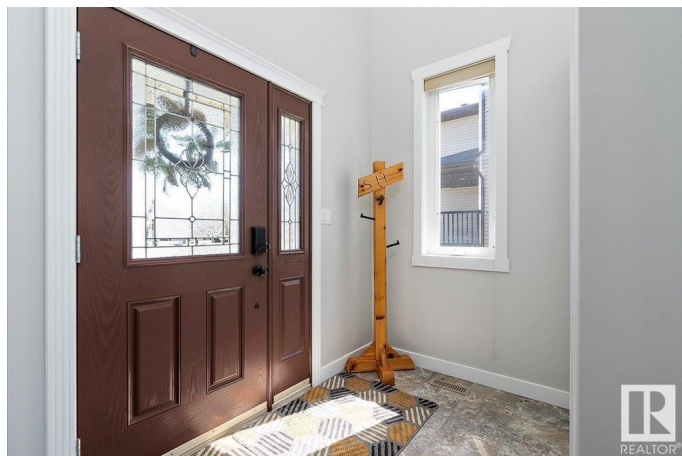
Tofield, Tofield, AB

GREAT FAMILY HOME! 4 bedroom, 3 1/2 bathroom, 2 storey with double attached garage! Open concept design of kitchen, dinette, and living room greets you upon entering this lovely home. Kitchen features: tiered prep island with bar seating and stainless steel appliances. Sunny living room has gas fireplace and dining area has access to west-facing deck. 2pc bathroom and laundry completes the main floor. Upper level consists of bonus entertaining room, primary bedroom with 3pc ensuite & walkin closet, 2nd & 3rd bedrooms, and 4pc bathroom. Basement has in-floor heating and is finished with family room, bedroom, exercise room, and 3pc bathroom. Backyard is fully fenced and beautifully landscaped! Tiered, stone surround landscaping is highlighted by patio area, firepit area, shrubbery, and flower beds! Walking distance to Schools. A must see !!

Built in 2011

### Essential Information

|            |           |
|------------|-----------|
| MLS® #     | E4435786  |
| Price      | \$429,900 |
| Bedrooms   | 4         |
| Bathrooms  | 3.50      |
| Full Baths | 3         |
| Half Baths | 1         |



|                |                        |
|----------------|------------------------|
| Square Footage | 1,901                  |
| Acres          | 0.00                   |
| Year Built     | 2011                   |
| Type           | Single Family          |
| Sub-Type       | Detached Single Family |
| Style          | 2 Storey               |
| Status         | Active                 |

### **Community Information**

|             |                            |
|-------------|----------------------------|
| Address     | 8 Beaverhill View Crescent |
| Area        | Tofield                    |
| Subdivision | Tofield                    |
| City        | Tofield                    |
| County      | ALBERTA                    |
| Province    | AB                         |
| Postal Code | T0B 4J0                    |

### **Amenities**

|           |                                    |
|-----------|------------------------------------|
| Amenities | Air Conditioner, Deck, See Remarks |
| Parking   | Double Garage Attached             |

### **Interior**

|                   |   |
|-------------------|---|
| Interior Features | ensuite bathroom  |
| Appliances        | Air Conditioning-Central, Dishwasher-Built-In, Dryer, Garage Opener, Refrigerator, Storage Shed, Stove-Electric, Washer, Window Coverings |
| Heating           | Forced Air-1, In Floor Heat System, Natural Gas   |
| Fireplace         | Yes   |
| Fireplaces        | Tile Surround   |
| Stories           | 3   |
| Has Basement      | Yes   |
| Basement          | Full, Finished  |

### **Exterior**

|                   |   |
|-------------------|---|
| Exterior          | Wood, Stone, Vinyl  |
| Exterior Features | Fenced, Landscaped, No Back Lane, Playground Nearby, Schools, See Remarks |
| Roof              | Asphalt Shingles  |
| Construction      | Wood, Stone, Vinyl  |
| Foundation        | Concrete Perimeter  |

**School Information**

|            |                         |
|------------|-------------------------|
| Elementary | C.W.Sears Tofield (K-4) |
| Middle     | Tofield (5-9)           |
| High       | Tofield                 |

**Additional Information**

|                |                |
|----------------|----------------|
| Date Listed    | May 10th, 2025 |
| Days on Market | 3              |
| Zoning         | Zone 80        |

DATA IS DEEMED RELIABLE BUT IS NOT GUARANTEED ACCURATE BY THE REALTORS® ASSOCIATION OF EDMONTON. COPYRIGHT 2025 BY THE REALTORS® ASSOCIATION OF EDMONTON. ALL RIGHTS RESERVED.Trademarks are owned or controlled by the Canadian Real Estate Association (CREA) and identify real estate professionals who are members of CREA (REALTOR®, REALTORS®) and/or the quality of services they provide (MLS®, Multiple Listing Service®)

Listing information last updated on May 13th, 2025 at 12:32pm MDT