

\$159,000 - 210 5204 52 Avenue, Tofield

MLS® #E4435573

\$159,000

2 Bedroom, 2.00 Bathroom, 987 sqft

Condo / Townhouse on 0.00 Acres

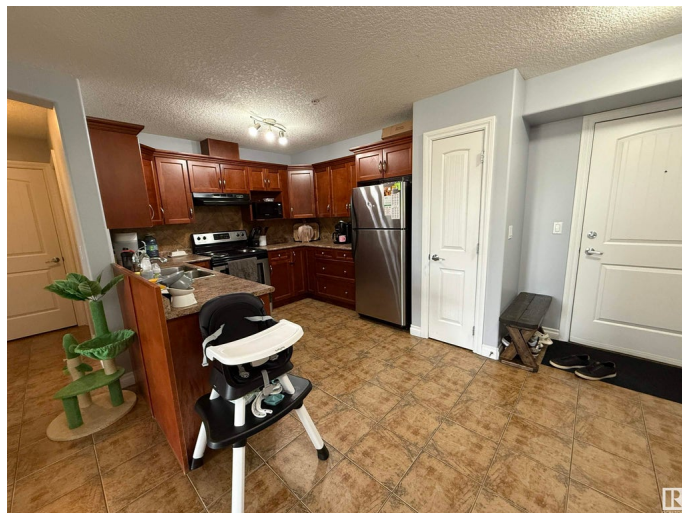
Tofield, Tofield, AB

Investor ALERT!!! Gorgeous, well-kept 2 bed, 2 bath condo in the heart of Tofield, just 30 mins from Edmonton! This spacious unit offers a bright open layout, functional kitchen, and a primary suite with walk-in closet & private ensuite. Enjoy the perks of in-suite laundry, private balcony looking on to a green space, plenty of storage, and built-in A/C for hot summer days. The building has low condo fees that include heat, water & exterior maintenance. Currently rented to great tenants, this is a perfect turnkey, CASH FLOWING investment property or a low-maintenance home for first-time buyers or downsizers. Affordable, functional, and move-in ready â€” this one wonâ€™t last long!

Built in 2009

Essential Information

MLS® #	E4435573
Price	\$159,000
Bedrooms	2
Bathrooms	2.00
Full Baths	2
Square Footage	987
Acres	0.00
Year Built	2009
Type	Condo / Townhouse



Sub-Type	Lowrise Apartment
Style	Single Level Apartment
Status	Active

Community Information

Address	210 5204 52 Avenue
Area	Tofield
Subdivision	Tofield
City	Tofield
County	ALBERTA
Province	AB
Postal Code	T0B 4J0

Amenities

Amenities	Off Street Parking, On Street Parking, Air Conditioner, Detectors Smoke, Security Door
Parking	Stall

Interior

Interior Features	ensuite bathroom
Appliances	Air Conditioning-Central, Dishwasher-Built-In, Dryer, Hood Fan, Refrigerator, Stove-Electric, Washer
Heating	Forced Air-1, Natural Gas
Fireplace	Yes
Fireplaces	Corner
# of Stories	3
Stories	1
Has Basement	Yes
Basement	None, No Basement

Exterior

Exterior	Wood, Stucco
Exterior Features	Flat Site, Landscaped, Shopping Nearby
Roof	Asphalt Shingles
Construction	Wood, Stucco
Foundation	Concrete Perimeter

Additional Information

Date Listed	May 9th, 2025
-------------	---------------

Days on Market	24
Zoning	Zone 80
Condo Fee	\$364

DATA IS DEEMED RELIABLE BUT IS NOT GUARANTEED ACCURATE BY THE REALTORS® ASSOCIATION OF EDMONTON. COPYRIGHT 2025 BY THE REALTORS® ASSOCIATION OF EDMONTON. ALL RIGHTS RESERVED. Trademarks are owned or controlled by the Canadian Real Estate Association (CREA) and identify real estate professionals who are members of CREA (REALTOR®, REALTORS®) and/or the quality of services they provide (MLS®, Multiple Listing Service®)

Listing information last updated on June 2nd, 2025 at 10:32am MDT