

## \$379,000 - 54018 Rr 51, Rural Lac Ste. Anne County

MLS® #E4434866

**\$379,000**

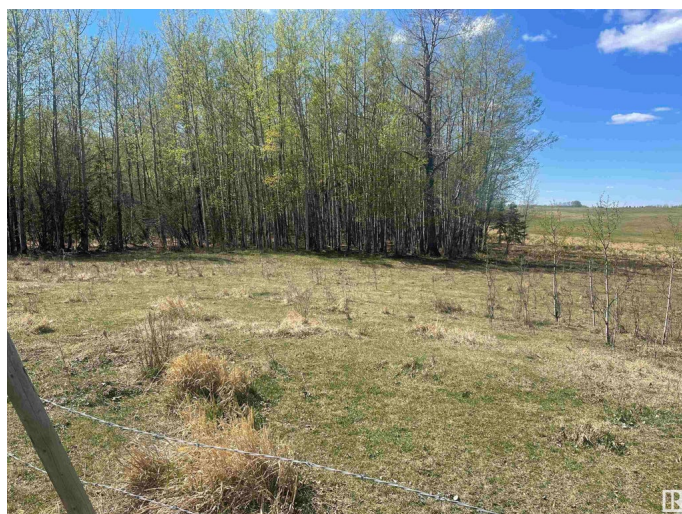
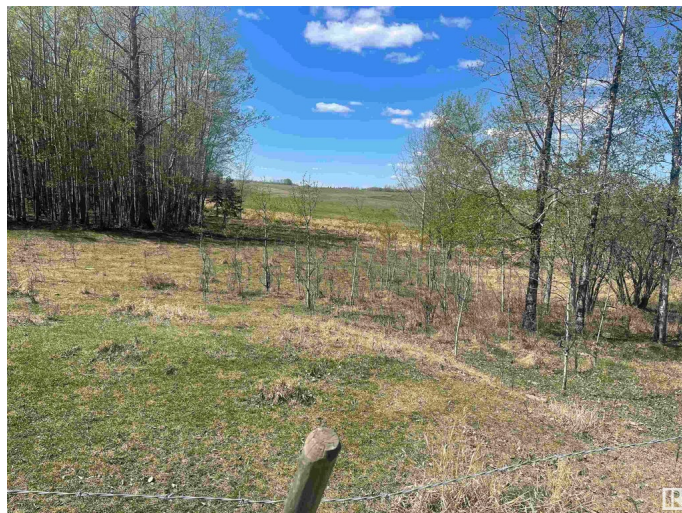
0 Bedroom, 0.00 Bathroom,  
Rural on 74.65 Acres

Darwell, Rural Lac Ste. Anne County, AB

This 74.65 ACRES is located on great location, mostly open rolling land making it a perfect place for you to build your dream country home and set up a farm operation. Located on a private no-through road just southwest of Darwell. 2 minutes from Lake Isle and the Silver Sands Golf Course, 51 miles West of Edmonton, 30 minutes from Stony Plain. The real deal of life time with this land that it INCLUDES 475.25 ACRES OF ADJASCENT CROWN LAND LEASED FOR GRAZING. The lease for grazing is transferable to the new owner of this land. If you have the potential to imagine and have a plan to take advantage of the opportunity just presented then this is your call to possibly extend your operation to a new level with competitive edge over others. GST may be applicable.

### Essential Information

MLS® #	E4434866
Price	\$379,000
Bathrooms	0.00
Acres	74.65
Type	Rural
Sub-Type	Vacant Lot/Land
Status	Active



## Community Information

Address	54018 Rr 51
Area	Rural Lac Ste. Anne County
Subdivision	Darwell
City	Rural Lac Ste. Anne County
County	ALBERTA
Province	AB
Postal Code	T0E 0L0

## Exterior

Exterior Features   Fenced, Golf Nearby, No Through Road, Private Setting, Rolling Land

## Additional Information

Date Listed	May 7th, 2025
Days on Market	41
Zoning	Zone 70

DATA IS DEEMED RELIABLE BUT IS NOT GUARANTEED ACCURATE BY THE REALTORS® ASSOCIATION OF EDMONTON. COPYRIGHT 2025 BY THE REALTORS® ASSOCIATION OF EDMONTON. ALL RIGHTS RESERVED. Trademarks are owned or controlled by the Canadian Real Estate Association (CREA) and identify real estate professionals who are members of CREA (REALTOR®, REALTORS®) and/or the quality of services they provide (MLS®, Multiple Listing Service®)

Listing information last updated on June 16th, 2025 at 10:02pm MDT