

\$519,000 - 4511 164a Avenue, Edmonton

MLS® #E4433832

\$519,000

3 Bedroom, 3.00 Bathroom, 1,454 sqft

Single Family on 0.00 Acres

Brintnell, Edmonton, AB

WELCOME HOME, stop the search this is the ONE! THIS home has it all! With over 2800 sq feet of living space that includes 3 bedrooms, 3 full bathrooms, bright open concept kitchen, dining room and living room with a corner fireplace. This Bright and Spacious Bi- level is located in Brintnell, with plenty of schools shopping and close access to the AH. This home is stunning with an open foyer that will leave you breathless. THIS HOME IS 100% turn key with a NEW furnace, NEW Central AC, NEW hot water on demand, vaulted ceilings and convenient double front attached garage. This Fully finished basement was once operated as a day home with 3 large windows and plenty of room for a play room, rec room or extra bedrooms. The basement is complete with a new 4 piece soaker tub bathroom, upgraded GRANITE kitchen countertops and freshly painted walls with over 2800 sq feet of living space. With a wonderful west facing deck, fully fenced and landscaped yard with an upper and lower deck.

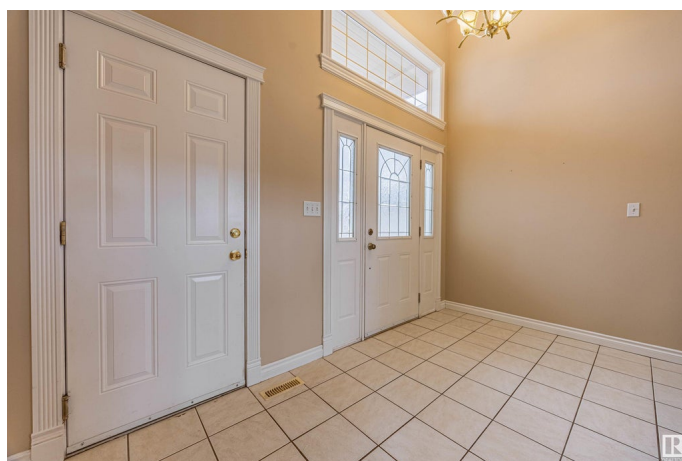
Built in 2006

Essential Information

MLS® # E4433832

Price \$519,000

Bedrooms 3



Bathrooms	3.00
Full Baths	3
Square Footage	1,454
Acres	0.00
Year Built	2006
Type	Single Family
Sub-Type	Detached Single Family
Style	Bi-Level
Status	Active

Community Information

Address	4511 164a Avenue
Area	Edmonton
Subdivision	Brintnell
City	Edmonton
County	ALBERTA
Province	AB
Postal Code	T5Y 0C7

Amenities

Amenities	Air Conditioner, Deck, Hot Water Instant, No Animal Home, No Smoking Home, Vaulted Ceiling, Vinyl Windows
Parking	Double Garage Attached

Interior

Interior Features	ensuite bathroom
Appliances	Dishwasher-Built-In, Dryer, Freezer, Refrigerator, Stove-Electric, Washer
Heating	Forced Air-1, Natural Gas
Fireplace	Yes
Fireplaces	Mantel
Stories	2
Has Basement	Yes
Basement	Full, Finished

Exterior

Exterior	Wood, Vinyl
Exterior Features	Fenced, Landscaped, Schools, Shopping Nearby
Roof	Asphalt Shingles
Construction	Wood, Vinyl

Foundation Concrete Perimeter

Additional Information

Date Listed May 1st, 2025

Days on Market 8

Zoning Zone 03

DATA IS DEEMED RELIABLE BUT IS NOT GUARANTEED ACCURATE BY THE REALTORS® ASSOCIATION OF EDMONTON. COPYRIGHT 2025 BY THE REALTORS® ASSOCIATION OF EDMONTON. ALL RIGHTS RESERVED.Trademarks are owned or controlled by the Canadian Real Estate Association (CREA) and identify real estate professionals who are members of CREA (REALTOR®, REALTORS®) and/or the quality of services they provide (MLS®, Multiple Listing Service®)

Listing information last updated on May 9th, 2025 at 6:02pm MDT