

\$825,000 - 19 54129 Rge Road 275, Rural Parkland County

MLS® #E4433350

\$825,000

3 Bedroom, 3.00 Bathroom, 3,771 sqft

Rural on 3.16 Acres

Surrey Lane, Rural Parkland County, AB

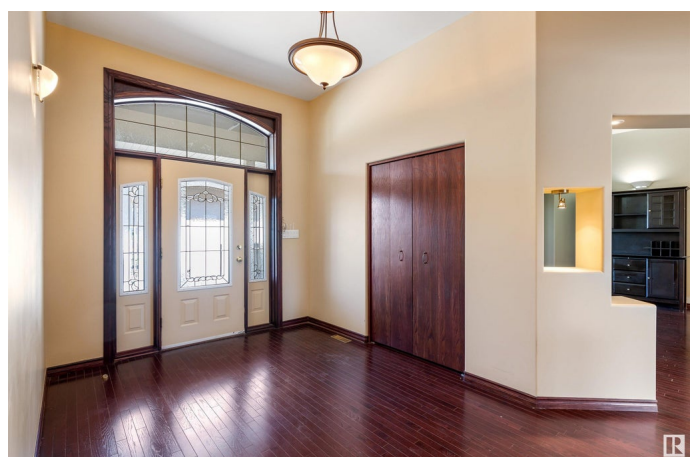
Perched up on the hill, discover this sprawling custom built BUNGALOW, surrounded by your own 3.16 acres at the end of a private cul de sac. The grand entrance has soaring ceilings & slate flooring. The centre of the home is a spectacular great room with new carpets, a w/b fireplace & a wall of windows. The expansive kitchen has numerous windows to take in the countryside, a large eating bar island, walk in pantry & granite counters. There is a formal dining room & french doors into an office. The primary bedroom features a large walk in closet, gas fireplace, 5-piece en suite with raised jetted tub & access to its own covered deck. There is a 2nd primary bedroom that also features a walk in closet, gas fireplace & a 4-piece en suite. Privately tucked away at the opposite end of the home is a 3rd bedroom, next to a 3-piece bathroom & the laundry room. This sensational home is complete with a triple attached garage. Upgrades including 10' ceiling height, 2 high efficiency furnaces & more!

Built in 2001

Essential Information

MLS® # E4433350

Price \$825,000



Bedrooms	3
Bathrooms	3.00
Full Baths	3
Square Footage	3,771
Acres	3.16
Year Built	2001
Type	Rural
Sub-Type	Detached Single Family
Style	Bungalow
Status	Active

Community Information

Address	19 54129 Rge Road 275
Area	Rural Parkland County
Subdivision	Surrey Lane
City	Rural Parkland County
County	ALBERTA
Province	AB
Postal Code	T7X 3S4

Amenities

Features	Ceiling 10 ft., Closet Organizers, Crawl Space, Deck, Front Porch, Hot Water Natural Gas, Vaulted Ceiling, Vinyl Windows, See Remarks
----------	---

Interior

Interior Features	ensuite bathroom
Heating	Forced Air-2, Natural Gas
Fireplace	Yes
Stories	1
Has Basement	Yes
Basement	None, No Basement

Exterior

Exterior	Wood
Exterior Features	Golf Nearby, Landscaped, Private Setting, Treed Lot
Construction	Wood
Foundation	Concrete Perimeter

Additional Information

Date Listed April 29th, 2025

Days on Market 3

Zoning Zone 70

DATA IS DEEMED RELIABLE BUT IS NOT GUARANTEED ACCURATE BY THE REALTORS® ASSOCIATION OF EDMONTON. COPYRIGHT 2025 BY THE REALTORS® ASSOCIATION OF EDMONTON. ALL RIGHTS RESERVED. Trademarks are owned or controlled by the Canadian Real Estate Association (CREA) and identify real estate professionals who are members of CREA (REALTOR®, REALTORS®) and/or the quality of services they provide (MLS®, Multiple Listing Service®)

Listing information last updated on May 1st, 2025 at 10:32pm MDT