

# \$274,900 - 131 Spatinow Drive, Wetaskiwin

MLS® #E4431984

**\$274,900**

4 Bedroom, 2.00 Bathroom, 1,080 sqft  
Single Family on 0.00 Acres

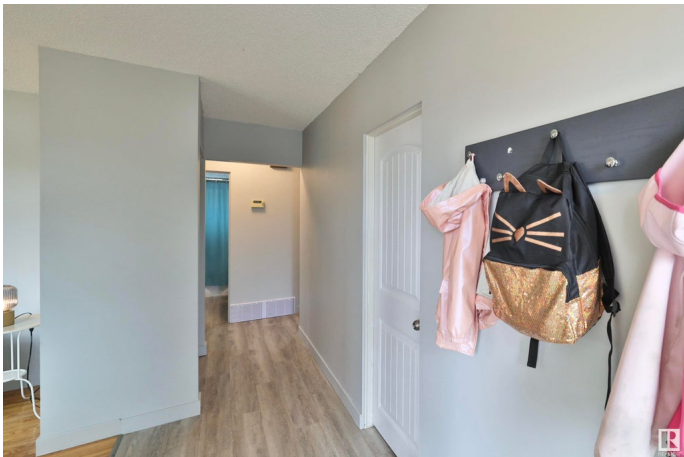
Spatinow, Wetaskiwin, AB

Nestled in a charming, mature neighborhood in Wetaskiwin, this 1,070 sq ft bungalow is full of character and warmth. Offering three bedrooms on the main floor, upgraded kitchen and hardwood floors. It’s the perfect blend of comfort and functionality. The home sits on a huge lot, providing plenty of privacy in an outdoor space thats perfect for gardening, entertaining, or simply enjoying the peace and quiet of the established surroundings. Inside, you’ll find a partially developed basement ready for your personal touch. Upgrades include newer shingles on the house, some newer vinyl windows and an updated kitchen that all add modern efficiency while preserving the home’s timeless appeal. Whether you’re a first-time buyer, growing family, or downsizer, this bungalow delivers space, charm, and potential in one of Wetaskiwin’s most desirable, mature areas. A great opportunity to own a home with history, heart, and room to grow.

Built in 1963

## Essential Information

MLS® #	E4431984
Price	\$274,900
Bedrooms	4
Bathrooms	2.00



Full Baths	2
Square Footage	1,080
Acres	0.00
Year Built	1963
Type	Single Family
Sub-Type	Detached Single Family
Style	Bungalow
Status	Active

### Community Information

Address	131 Spatinow Drive
Area	Wetaskiwin
Subdivision	Spatinow
City	Wetaskiwin
County	ALBERTA
Province	AB
Postal Code	T9A 1W3

### Amenities

Amenities	On Street Parking, No Smoking Home, Vinyl Windows
Parking	Over Sized, Single Garage Detached

### Interior

Appliances	Dishwasher-Built-In, Dryer, Hood Fan, Refrigerator, Stove-Electric, Washer, Window Coverings, See Remarks
Heating	Forced Air-1, Natural Gas
Stories	2
Has Basement	Yes
Basement	Full, Partially Finished

### Exterior

Exterior	Wood, See Remarks
Exterior Features	Airport Nearby, Fenced, Flat Site, Landscaped, Playground Nearby
Roof	Asphalt Shingles
Construction	Wood, See Remarks
Foundation	Concrete Perimeter

### Additional Information

Date Listed	April 21st, 2025
-------------	------------------

Days on Market 10

Zoning Zone 80

DATA IS DEEMED RELIABLE BUT IS NOT GUARANTEED ACCURATE BY THE REALTORS® ASSOCIATION OF EDMONTON. COPYRIGHT 2025 BY THE REALTORS® ASSOCIATION OF EDMONTON. ALL RIGHTS RESERVED. Trademarks are owned or controlled by the Canadian Real Estate Association (CREA) and identify real estate professionals who are members of CREA (REALTOR®, REALTORS®) and/or the quality of services they provide (MLS®, Multiple Listing Service®)

Listing information last updated on May 1st, 2025 at 9:17pm MDT