

\$917,900 - 40 50322 Rge Road 232, Rural Leduc County

MLS® #E4430676

\$917,900

4 Bedroom, 4.00 Bathroom, 1,702 sqft

Rural on 3.04 Acres

Rutherford (Leduc County), Rural Leduc County, AB

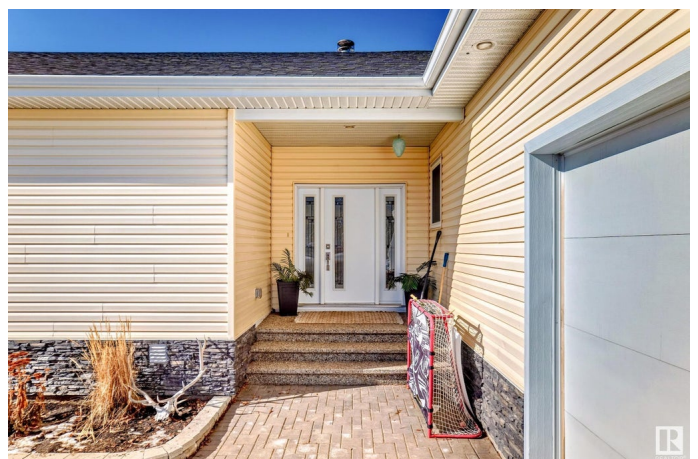
Welcome to your DREAM HOME in the prestigious Rutherford Hills of Leduc County! This custom-built masterpiece boasts 4 beds, 4 baths, and 1700 sq ft of luxurious living space sitting on 3.04 acres. Step inside and be greeted by 9 ft ceilings, the gourmet kitchen is a chef's delight with top-of-the-line SS appliances and loads of cabinets, large living room with cozy wood burning fireplace & patio doors leading out to a south facing deck. High-end finishes throughout, tilt & turn windows that flood the home w/ natural light. Enjoy filtered water with the built-in reverse osmosis system. Cozy up by the fireplace in the spacious living room or retreat to the master suite with a spa-like ensuite. Bsmt is fully finished with heated floors. Outside, enjoy summer afternoons on the deck overlooking a beautifully landscaped yard. The dbl attached garage is oversized + heated and another dbl heated detached garage sits on the East side of the home. Mins to Beaumont, Leduc, Nisku, EIA, Edmonton & HWY 21. PERFECTION!

Built in 2017

Essential Information

MLS® # E4430676

Price \$917,900



| | |
|----------------|------------------------|
| Bedrooms | 4 |
| Bathrooms | 4.00 |
| Full Baths | 4 |
| Square Footage | 1,702 |
| Acres | 3.04 |
| Year Built | 2017 |
| Type | Rural |
| Sub-Type | Detached Single Family |
| Style | Bungalow |
| Status | Active |

Community Information

| | |
|-------------|---------------------------|
| Address | 40 50322 Rge Road 232 |
| Area | Rural Leduc County |
| Subdivision | Rutherford (Leduc County) |
| City | Rural Leduc County |
| County | ALBERTA |
| Province | AB |
| Postal Code | T4X 0K9 |

Amenities

| | |
|----------|---|
| Features | Ceiling 9 ft., Closet Organizers, Deck, Greenhouse, Parking-Extra, R.V. Storage |
|----------|---|

Interior

| | |
|-------------------|---------------------------|
| Interior Features | ensuite bathroom |
| Heating | Forced Air-1, Natural Gas |
| Fireplace | Yes |
| Stories | 2 |
| Has Basement | Yes |
| Basement | Full, Finished |

Exterior

| | |
|-------------------|--|
| Exterior | Wood |
| Exterior Features | Fruit Trees/Shrubs, Hillside, Landscaped, Vegetable Garden |
| Construction | Wood |
| Foundation | Concrete Perimeter |

Additional Information

Date Listed April 13th, 2025

Days on Market 18

Zoning Zone 80

DATA IS DEEMED RELIABLE BUT IS NOT GUARANTEED ACCURATE BY THE REALTORS® ASSOCIATION OF EDMONTON. COPYRIGHT 2025 BY THE REALTORS® ASSOCIATION OF EDMONTON. ALL RIGHTS RESERVED. Trademarks are owned or controlled by the Canadian Real Estate Association (CREA) and identify real estate professionals who are members of CREA (REALTOR®, REALTORS®) and/or the quality of services they provide (MLS®, Multiple Listing Service®)

Listing information last updated on May 1st, 2025 at 2:02pm MDT