

\$179,900 - 301 5401 37a Avenue, Wetaskiwin

MLS® #E4429929

\$179,900

2 Bedroom, 2.00 Bathroom, 1,227 sqft

Condo / Townhouse on 0.00 Acres

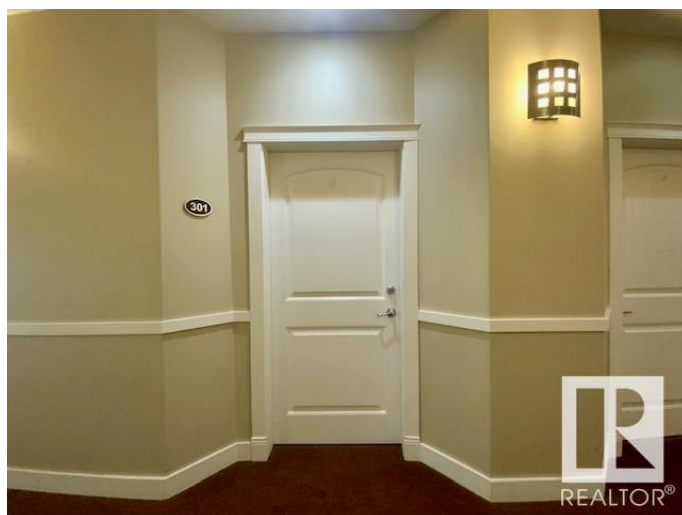
Wetaskiwin, Wetaskiwin, AB

LUXURIOUS TOP FLOOR CONDO in Stone Ridge Manor! Gorgeous, open-concept floor plan with 1227 sq ft of living space. 2 bright & spacious bedrooms with closets & organizers + 2 full baths. Some of the many features are 9'™ ceilings, AIR-CONDITIONING, ELECTRIC FIREPLACE, BALCONY, IN SUITE LAUNDRY and R/O water filter system. Living room is spacious with cozy electric fireplace & laminate flooring. Kitchen is a Chef's delight with 4 appliances, ample of beautiful cabinetry with tons of storage & counter space. Building has an EXERCISE ROOM, ELEVATOR, ASSIGNED, COVERED PARKING. Condo fees cover water, sewer and heat. Welcome Home to EASY LIVING!

Built in 2007

Essential Information

MLS® #	E4429929
Price	\$179,900
Bedrooms	2
Bathrooms	2.00
Full Baths	2
Square Footage	1,227
Acres	0.00
Year Built	2007
Type	Condo / Townhouse



Sub-Type	Lowrise Apartment
Style	Single Level Apartment
Status	Active

Community Information

Address	301 5401 37a Avenue
Area	Wetaskiwin
Subdivision	Wetaskiwin
City	Wetaskiwin
County	ALBERTA
Province	AB
Postal Code	T9A 1H9

Amenities

Amenities	Air Conditioner, Deck, No Animal Home, No Smoking Home, Patio, Recreation Room/Centre, Vinyl Windows
Parking	Single Carport

Interior

Interior Features	ensuite bathroom
Appliances	Dishwasher-Built-In, Dryer, Microwave Hood Fan, Refrigerator, Stove-Electric, Washer
Heating	Hot Water, Natural Gas
Fireplace	Yes
Fireplaces	Mantel, Tile Surround
# of Stories	3
Stories	1
Has Basement	Yes
Basement	None, No Basement

Exterior

Exterior	Wood, Stone, Stucco
Exterior Features	Back Lane, Golf Nearby, Landscaped, Paved Lane, Shopping Nearby
Roof	Asphalt Shingles
Construction	Wood, Stone, Stucco
Foundation	Concrete Perimeter

Additional Information

Date Listed	April 9th, 2025
-------------	-----------------

Days on Market	69
Zoning	Zone 80
Condo Fee	\$544

DATA IS DEEMED RELIABLE BUT IS NOT GUARANTEED ACCURATE BY THE REALTORS® ASSOCIATION OF EDMONTON. COPYRIGHT 2025 BY THE REALTORS® ASSOCIATION OF EDMONTON. ALL RIGHTS RESERVED. Trademarks are owned or controlled by the Canadian Real Estate Association (CREA) and identify real estate professionals who are members of CREA (REALTOR®, REALTORS®) and/or the quality of services they provide (MLS®, Multiple Listing Service®)

Listing information last updated on June 17th, 2025 at 3:32am MDT