

\$235,000 - 21 290 Spruce Ridge Road, Spruce Grove

MLS® #E4429287

\$235,000

3 Bedroom, 1.50 Bathroom, 1,071 sqft
Condo / Townhouse on 0.00 Acres

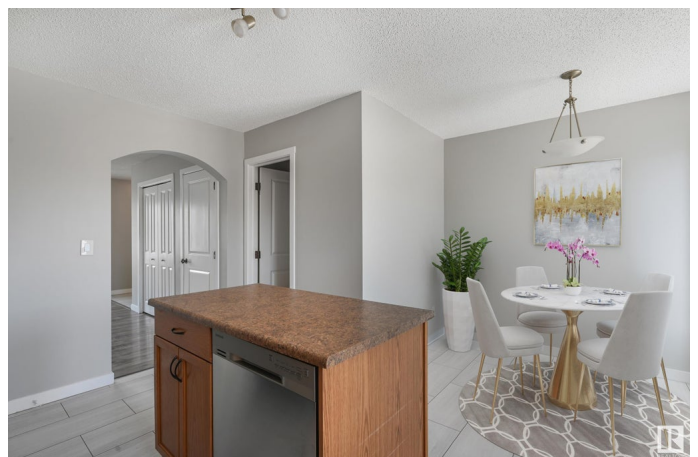
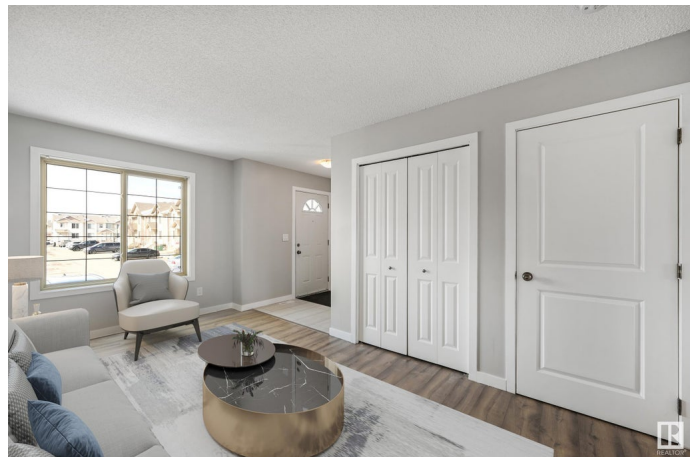
Spruce Ridge, Spruce Grove, AB

Welcome to this renovated 3 bedroom home in the heart of Spruce Grove! This townhome has a rare opportunity to add a future 4th basement bedroom! Recent updates include Brand New Paint, Vinyl Plank Flooring and Vinyl Tile! You'll love the bright and airy feel of the main floor with a spacious kitchen, plenty of storage, pantry and great island. Upstairs has 3 bedrooms including a great master with walk in closet. Your basement is perfect for a future 4th bedroom and bonus room. Enjoy life in this prime location - steps to shopping, school and transit! Welcome home!

Built in 2007

Essential Information

MLS® #	E4429287
Price	\$235,000
Bedrooms	3
Bathrooms	1.50
Full Baths	1
Half Baths	1
Square Footage	1,071
Acres	0.00
Year Built	2007
Type	Condo / Townhouse
Sub-Type	Townhouse
Style	2 Storey



Status Active

Community Information

Address 21 290 Spruce Ridge Road
Area Spruce Grove
Subdivision Spruce Ridge
City Spruce Grove
County ALBERTA
Province AB
Postal Code T7X 0C4

Amenities

Amenities See Remarks
Parking Stall

Interior

Appliances Dishwasher-Built-In, Hood Fan, Refrigerator, Stove-Electric
Heating Forced Air-1, Natural Gas
Stories 2
Has Basement Yes
Basement Full, Unfinished

Exterior

Exterior Wood, Vinyl
Exterior Features See Remarks
Roof Asphalt Shingles
Construction Wood, Vinyl
Foundation Concrete Perimeter

Additional Information

Date Listed April 5th, 2025
Days on Market 26
Zoning Zone 91
Condo Fee \$360

DATA IS DEEMED RELIABLE BUT IS NOT GUARANTEED ACCURATE BY THE REALTORS® ASSOCIATION OF EDMONTON. COPYRIGHT 2025 BY THE REALTORS® ASSOCIATION OF EDMONTON. ALL RIGHTS RESERVED.Trademarks are owned or controlled by the Canadian Real Estate Association (CREA) and identify real estate professionals who are members of CREA (REALTOR®, REALTORS®) and/or the quality of services they provide (MLS®, Multiple Listing Service®)
Listing information last updated on May 1st, 2025 at 7:47pm MDT