

## \$834,000 - 27 Fosbury Link, Sherwood Park

MLS® #E4427074

**\$834,000**

5 Bedroom, 2.50 Bathroom, 2,515 sqft

Single Family on 0.00 Acres

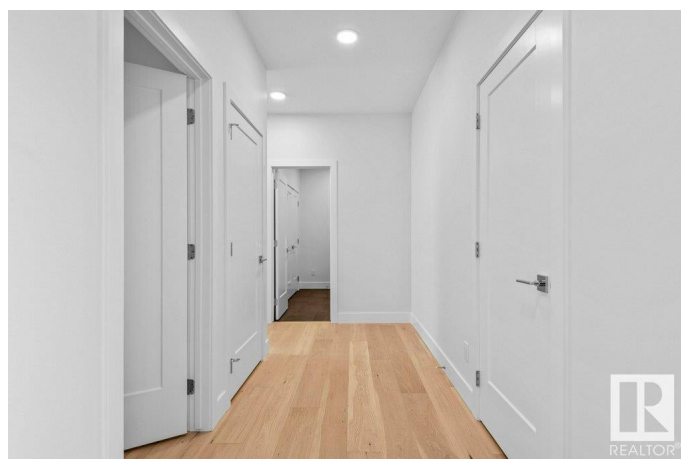
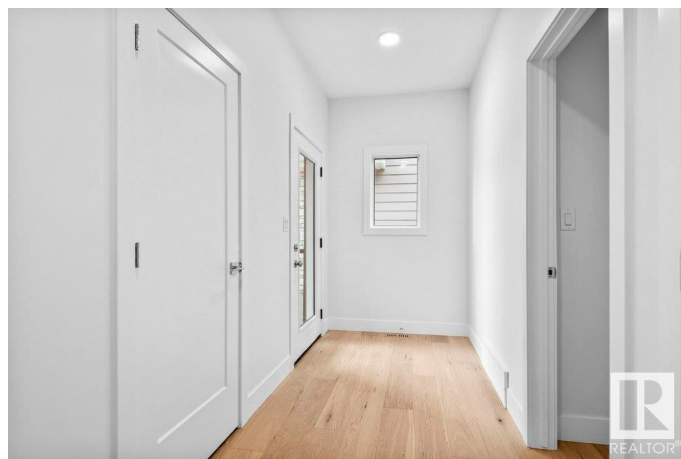
Salisbury Village, Sherwood Park, AB

IMMACULATE Family Home!! Welcome to Cameron's Joshua located in Sherwood Park's highly sought after community of Salisbury Village. This open concept home provides a bright and open floor plan. Offering over 2400 square feet of fine living with numerous large windows for natural light. Hardwood Floors on main, 2nd floor bonus room as well. Beautiful unique kitchen with upgraded cabinets and organizers including waterfall, quartz counter tops throughout. The main floor offers a generous large great & dining room electric fireplace and floor to ceiling tile. Bedroom on main floor as well and 2 piece powder room. The second level offers you a large bonus room, master Bedroom c/w 5 piece spa ensuite & WIC in addition 3 more bedrooms and Laundry room for a total of a 5 bedroom home. Welcome Home!!

Built in 2024

### Essential Information

MLS® #	E4427074
Price	\$834,000
Bedrooms	5
Bathrooms	2.50
Full Baths	2
Half Baths	1
Square Footage	2,515



Acres	0.00
Year Built	2024
Type	Single Family
Sub-Type	Detached Single Family
Style	2 Storey
Status	Active

### Community Information

Address	27 Fosbury Link
Area	Sherwood Park
Subdivision	Salisbury Village
City	Sherwood Park
County	ALBERTA
Province	AB
Postal Code	T6N 1J5

### Amenities

Amenities	Carbon Monoxide Detectors, Ceiling 9 ft., Detectors Smoke, Hot Water Natural Gas, No Animal Home, No Smoking Home, Vinyl Windows, HRV System, Natural Gas BBQ Hookup
Parking Spaces	4
Parking	Double Garage Attached

### Interior

Interior Features	ensuite bathroom
Appliances	Garage Control, Garage Opener
Heating	Forced Air-1, Natural Gas
Fireplace	Yes
Fireplaces	Glass Door
Stories	2
Has Basement	Yes
Basement	Full, Unfinished

### Exterior

Exterior	Wood, Stone, Vinyl
Exterior Features	Flat Site, No Back Lane, Not Landscaped, Playground Nearby, Schools, Shopping Nearby
Roof	Asphalt Shingles
Construction	Wood, Stone, Vinyl

Foundation                      Concrete Perimeter

**Additional Information**

Date Listed                      March 22nd, 2025

Days on Market                40

Zoning                            Zone 25

DATA IS DEEMED RELIABLE BUT IS NOT GUARANTEED ACCURATE BY THE REALTORS® ASSOCIATION OF EDMONTON. COPYRIGHT 2025 BY THE REALTORS® ASSOCIATION OF EDMONTON. ALL RIGHTS RESERVED.Trademarks are owned or controlled by the Canadian Real Estate Association (CREA) and identify real estate professionals who are members of CREA (REALTOR®, REALTORS®) and/or the quality of services they provide (MLS®, Multiple Listing Service®)

Listing information last updated on May 1st, 2025 at 4:17pm MDT