

\$489,000 - 30 Westwyck Link, Spruce Grove

MLS® #E4424694

\$489,000

3 Bedroom, 3.00 Bathroom, 1,691 sqft
Single Family on 0.00 Acres

Fenwyck, Spruce Grove, AB

Your new address in Fenwyck surrounded by walkways and trails. This beautiful open concept home boasts a huge living space with a feature fireplace wall and an ample sized kitchen, a big island with a neatly tucked away dining area. A Den/Bedroom with a full bathroom and Laundry on the main floor. Upstairs consist of a bonus room, A primary bedroom with a good sized en-suite and a walk-in-closet. Two more good sized bedrooms with a full bathroom. The package gets completed and complimented by a 10'x10' deck and a double detached garage. A separate entrance to the basement is another extra feature. Still time to choose your finishings

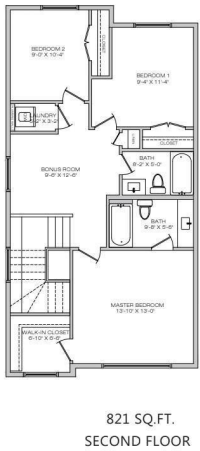
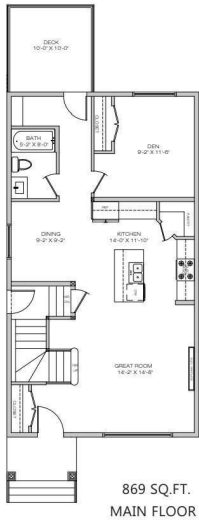
Built in 2025

Essential Information

MLS® #	E4424694
Price	\$489,000
Bedrooms	3
Bathrooms	3.00
Full Baths	3
Square Footage	1,691
Acres	0.00
Year Built	2025
Type	Single Family



CANNES
1690sq.ft.
House Width - 22'



Floor plan , specifications & dtmesions shown are approximate and subject to change without notice.

Sub-Type	Detached Single Family
Style	2 Storey
Status	Active

Community Information

Address	30 Westwyck Link
Area	Spruce Grove
Subdivision	Fenwyck
City	Spruce Grove
County	ALBERTA
Province	AB
Postal Code	T7X 3H1

Amenities

Amenities	See Remarks
Parking	Double Garage Detached

Interior

Interior Features	ensuite bathroom
Appliances	See Remarks
Heating	Forced Air-1, Natural Gas
Stories	2
Has Basement	Yes
Basement	Full, Unfinished

Exterior

Exterior	Wood, Fiber Cement, Stone, Vinyl
Exterior Features	See Remarks
Roof	Asphalt Shingles
Construction	Wood, Fiber Cement, Stone, Vinyl
Foundation	Concrete Perimeter

Additional Information

Date Listed	March 7th, 2025
Days on Market	148
Zoning	Zone 91

DATA IS DEEMED RELIABLE BUT IS NOT GUARANTEED ACCURATE BY THE REALTORS® ASSOCIATION OF EDMONTON. COPYRIGHT 2025 BY THE REALTORS® ASSOCIATION OF EDMONTON. ALL RIGHTS RESERVED. Trademarks are owned or controlled by the Canadian Real Estate Association (CREA) and identify real estate professionals who are members of CREA (REALTOR®, REALTORS®) and/or the quality of services they



provide (MLS®®, Multiple Listing Service®®)
Listing information last updated on August 2nd, 2025 at 7:17am MDT