

## \$260,000 - N/A, Spruce Grove

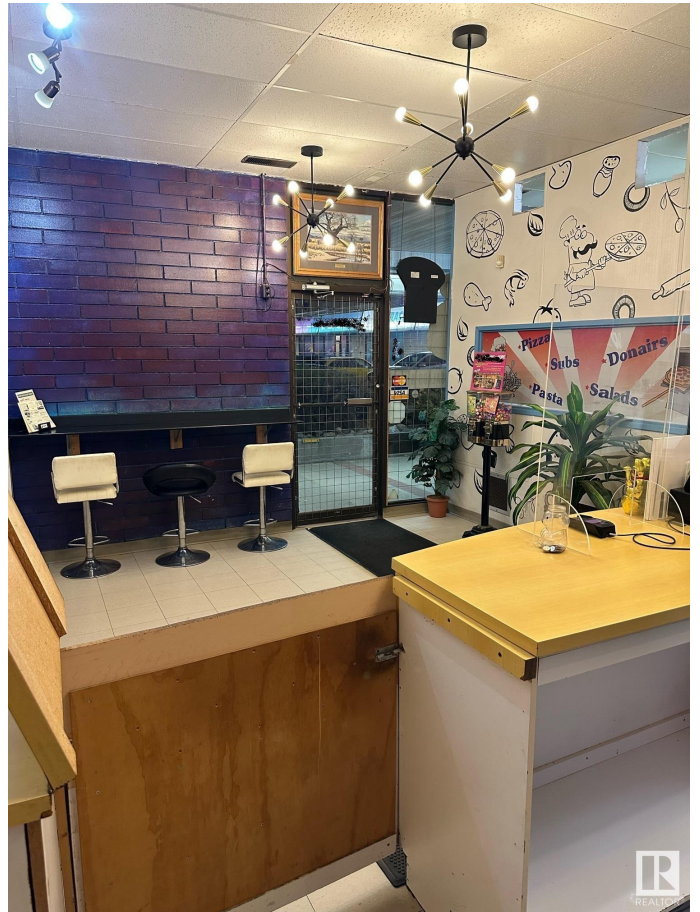
MLS® #E4411979

**\$260,000**

0 Bedroom, 0.00 Bathroom,  
Business on 0.00 Acres

Broxton Park, Spruce Grove, AB

Seize the chance to own a thriving pizza and pasta business in a prime location. This beloved eatery has a strong reputation for quality food and exceptional service. With a fully equipped kitchen, cozy dining area, and an inviting atmosphere, it's a perfect place for families and friends to gather. This business has been operating for over 30 years. This turnkey operation features a loyal customer base. Perfect for aspiring restaurateurs or seasoned operators looking to expand.



### Essential Information

MLS® #	E4411979
Price	\$260,000
Bathrooms	0.00
Acres	0.00
Type	Business
Status	Active

### Community Information

Address	N/A
Area	Spruce Grove
Subdivision	Broxton Park
City	Spruce Grove
County	ALBERTA
Province	AB

Postal Code T7X 4J7

### Additional Information

Date Listed October 28th, 2024

Days on Market 301

Zoning Zone 91



DATA IS DEEMED RELIABLE BUT IS NOT GUARANTEED ACCURATE BY THE REALTORS® ASSOCIATION OF EDMONTON. COPYRIGHT 2025 BY THE REALTORS® ASSOCIATION OF EDMONTON. ALL RIGHTS RESERVED. Trademarks are owned or controlled by the Canadian Real Estate Association (CREA) and identify real estate professionals who are members of CREA (REALTOR®, REALTORS®) and/or the quality of services they provide (MLS®, Multiple Listing Service®)

Listing information last updated on August 24th, 2025 at 11:32pm MDT

