

\$0 - 112 111 Broadway Boulevard, Sherwood Park

MLS® #E4314318

\$0

0 Bedroom, 0.00 Bathroom,
Retail on 0.00 Acres

Broadview Park, Sherwood Park, AB

2,400-2,850 sq.ft retail/office space located on Broadway Boulevard in Sherwood Park. Other professional tenants include: Core Wellness and Chiropractic, Drift Float Studio & Massage, Celtic Management, Park Veterinary, and Investors Group. Located near Windsor Plywood, Align Orthodontics, and the Bethel Transit Terminal

Built in 2003

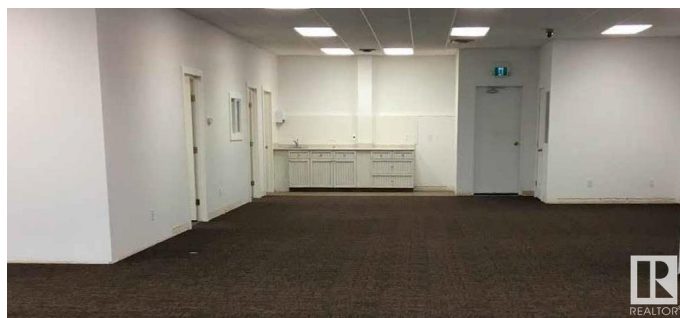
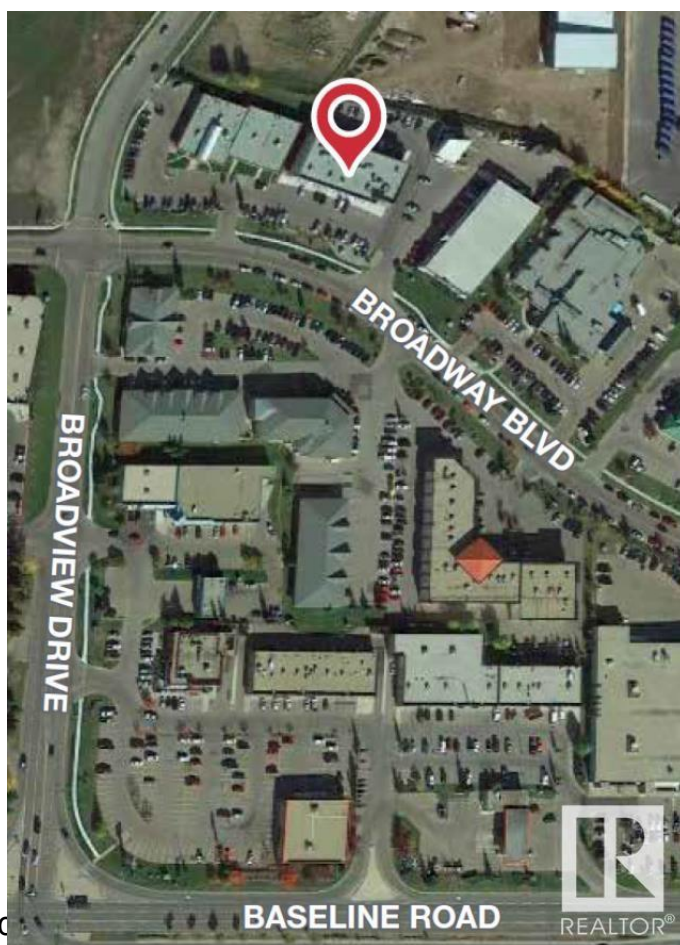
Essential Information

MLS® #	E4314318
Bathrooms	0.00
Acres	0.00
Year Built	2003
Type	Retail
Status	Active

Community Information

Address	112 111 Broadway Boulevard
Area	Sherwood Park
Subdivision	Broadview Park
City	Sherwood Park
County	ALBERTA
Province	AB
Postal Code	T8H 1T1

Exterior



Exterior	Concrete, Wood Frame
Construction	Concrete, Wood Frame

Additional Information

Date Listed	September 21st, 2022
Days on Market	1000
Zoning	Zone 25

DATA IS DEEMED RELIABLE BUT IS NOT GUARANTEED ACCURATE BY THE REALTORS® ASSOCIATION OF EDMONTON. COPYRIGHT 2025 BY THE REALTORS® ASSOCIATION OF EDMONTON. ALL RIGHTS RESERVED.Trademarks are owned or controlled by the Canadian Real Estate Association (CREA) and identify real estate professionals who are members of CREA (REALTOR®, REALTORS®) and/or the quality of services they provide (MLS®, Multiple Listing Service®)

Listing information last updated on June 16th, 2025 at 10:47pm MDT